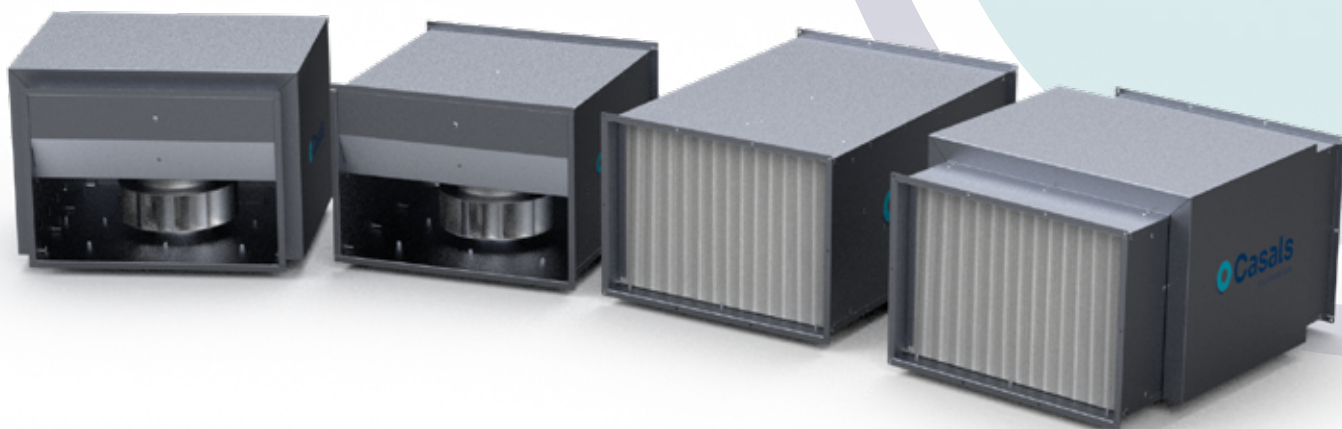


SB & SBC-3 EEC RANGE

- SB-3 & SBC-3 EEC
- SB-3 & SBC-3 PLUS EEC
- SB-3 & SBC-3 FILTER EEC
- SB-3 & SBC-3 PLUS FILTER EEC

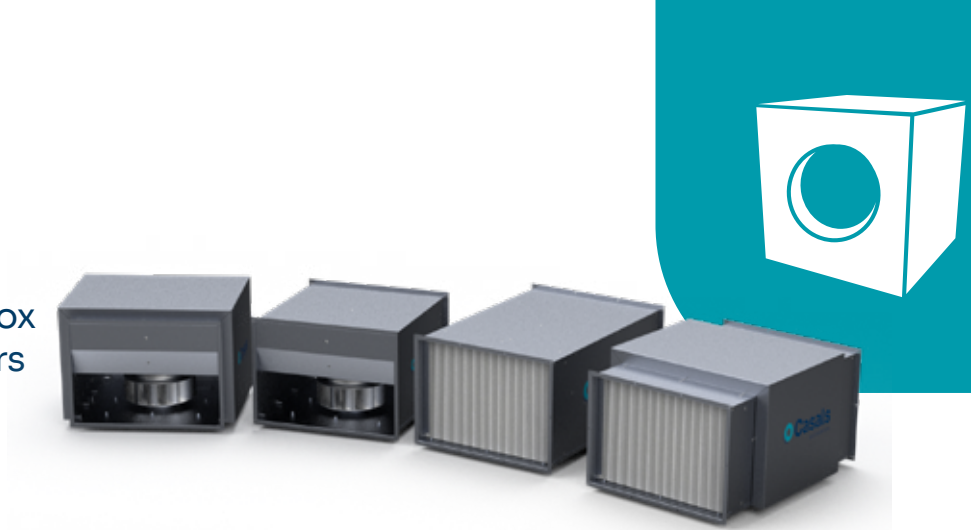
CABINET FANS



Cabinet fans

SB & SBC-3 EEC RANGE

Centrifugal in low profile box with EC external rotor, filters and insulation



◦ Advantage

◦ SB-SB-3 EEC is available in rectangular and circular inlets to adapt to any type of duct: from Ø125mm to Ø560mm for SBC-3 EEC with circular inlet, and from 300x150mm to 800x600mm for SB-3EEC with rectangular inlet. In both cases, the adaptation to the duct can be carried out directly without an adapter.

◦ High efficiency filter boxes. It complies with the ecodesign requirements of ErP2022, both in the ventilation unit and in the impeller before what is required by European Law.

◦ Standard versions, with filters, with insulation and with insulated box and two filtration stages.

◦ The low-profile box allows installation in very confined spaces. The insulated version, the SB-3 PLUS EEC and SB-3 PLUS FILTER EEC, have 45mm thickness of rock wool that confers great acoustic insulation, with a 60% reduction in the sound level compared to the non-isolated versions.

◦ The new SB-3 EEC are equipped with a high-efficiency EC electronic motor that allows us to reduce consumption and increase performance, in addition to being fully regulated.

◦ These fans incorporate deflector fins to improve the performance of the set and reduce the noise level by 7%.

◦ Ease of maintenance and inspection by simply removing the lower screwed panel. This makes it especially interesting for versions with filters since they must be replaced periodically for their correct operation and to guarantee air quality.

◦ Up to 600 Pa of pressure available, which makes it ideal to be placed in ducted installations.

◦ The SB-3 FILTER EEC and SB-3 PLUS FILTER EEC versions have one (ISO COARSE 65% (G4) or two stages (ISO COARSE 65% (G4) and ISO ePM1 65% (F7) filtration of low pressure drop.

◦ Range and flow rate summary

◦ SB-3 & SBC-3 EEC

◦ SB-3 & SBC-3 PLUS EEC

◦ SB-3 & SBC-3 FILTER EEC

◦ SB-3 & SBC-3 PLUS FILTER EEC

◦ Available sizes:

◦ SB-3 EEC 3015-8060

◦ SBC-3 EEC 125-560

◦ Max flow rate: 7.030 m³/h.

◦ Applications

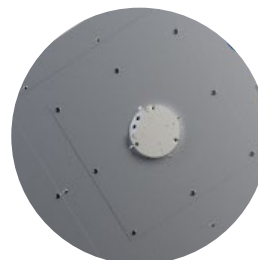
Designed for duct installation, they are indicated for:

◦ Air renovations in bathrooms and small rooms.

◦ Perfect for false ceiling installation.

◦ Working temperature range from -20°C to 60°C.

◦ Manufacturing details



Easy maintenance by bottom panel



Deflector fins

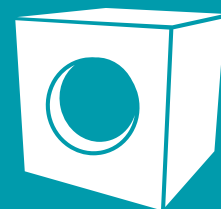


45mm thick insulation

Cabinet fans

SB & SBC-3 EEC RANGE

Centrifugal in low profile box
with EC external rotor, filters
and insulation



◦ **360° view**



Click on the picture to see the
product in 360° view with an
Internet navigator.

SB & SBC-3 EEC RANGE



- SB-3 EEC
- SBC-3 EEC



Click on each photo to view the product in our selection program

- SB-3 PLUS EEC
- SBC-3 PLUS EEC



Centrifugal fan in **low profile box with rectangular** (SB-3 EEC) and **circular** (SBC-3 EEC) flanges, with external rotor **EC motor**

◦ Manufacturing features

- Inline ventilation box made of galvanized steel with rectangular (SB-3 EEC) and circular (SBC-3 EEC) connection flanges.
- Self-cleaning impeller with back curved (backward) blades of high performance (IE4 for three phase motors and IE5 for single motors) and single inlet, direct driven. Dynamically balanced to minimize noise and vibration. Polyamide reinforced impeller for models 3015 and 4020 and aluminum plate for the rest.
- High efficiency, low noise external rotor EC motor. Speed control through a 0-10V or PWM signal. Single-phase 230V 50/60Hz power supply for models 3015 to 6040 and three-phase 400V 50/60Hz for sizes 7050 and 8060. IP44 motor and class B insulation.

◦ Applications

- Designed for duct installation, they are indicated for:
- Air renovations in bathrooms and small rooms.
 - Perfect for false ceiling installation.
 - Working temperature range from -20°C to 60°C.

Centrifugal fan in **soundproof low profile box with rectangular** (SB-3 PLUS EEC) and **circular** (SBC-3 PLUS EEC) flanges, with external rotor **EC motor**

◦ Manufacturing features

- Inline ventilation box made of galvanized steel with rectangular connection flanges. 40mm thick rock wool insulation.
- Self-cleaning impeller with back curved (backward) blades of high performance and single inlet, direct driven. Dynamically balanced to minimize noise and vibrations. Polyamide reinforced impeller for models 3015 and 4020 and aluminum plate for the rest.
- High efficiency (IE4 for three phase motors and IE5 for single motors), low noise external rotor EC motor. Speed control through a 0-10V or PWM signal. Single-phase 230V 50/60Hz power supply for models 3015 to 6040 and three-phase 400V 50/60Hz for sizes 7050 and 8060. IP44 motor and class B insulation.

◦ Applications

- Designed for duct installation, they are indicated for:
- Air renovations in bathrooms and small rooms.
 - Perfect for false ceiling installation.
 - Working temperature range from -20°C to 60°C.

SB & SBC-3 EEC RANGE

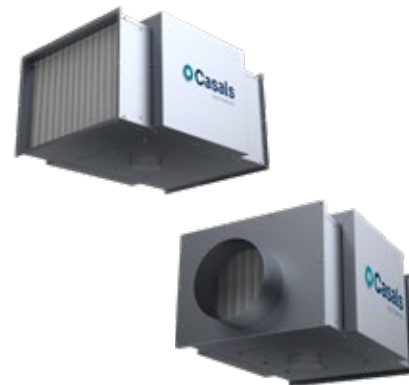


- SB-3 FILTER EEC
- SBC-3 FILTER EEC

- SB-3 PLUS FILTER EEC
- SBC-3 PLUS FILTER EEC



Click on each photo to view the product in our selection program



Centrifugal fan in **low profile** box with **rectangular** (SB-3 FILTER EEC) and **circular** (SBC-3 FILTER EEC) **flanges** and **filters**, with external rotor **EC motor**

Centrifugal fan in **soundproof low profile box** with **rectangular** (SB-3 PLUS FILTER EEC) and **circular** (SBC-3 PLUS FILTER EEC) **flanges** and **filters**, with external rotor **EC motor**

◦ Manufacturing features

- Inline ventilation box made of galvanized steel with rectangular (SB-3 FILTER EEC) and circular (SBC-3 FILTER EEC) connection flanges.
- Self-cleaning impeller with back curved (reaction) blades of high performance and single inlet, direct driven. Dynamically balanced to minimize noise and vibration. Polyamide reinforced impeller for models 3015 and 4020 and aluminum plate for the rest.
- High efficiency (IE4 for three phase motors and IE5 for single motors), low noise external rotor EC motor. Speed control through a 0-10V or PWM signal. Single-phase 230V 50/60Hz power supply for models 3015 to 6040 and three-phase 400V 50/60Hz for sizes 7050 and 8060. IP44 motor and class B insulation.
- Supplied with a filtration stage ISO COARSE \geq 60% (G4) or 2 stages ISO COARSE \geq 60% (G4) and ISO ePM1 \geq 50% (F7). Easily accessible inspection and cleaning register.

◦ Applications

- Designed for duct installation, they are indicated for:
- Air renovations in bathrooms and small rooms.
 - Perfect for false ceiling installation.
 - Working temperature range from -20°C to 60°C.

◦ Manufacturing features

- Inline ventilation box made of galvanized steel with rectangular connection flanges. 40mm thick rock wool insulation.
- Self-cleaning impeller with back curved (reaction) blades of high performance and single inlet, direct driven. Dynamically balanced to minimize noise and vibration. Polyamide reinforced impeller for models 3015 and 4020 and aluminum plate for the rest.
- High efficiency (IE4 for three phase motors and IE5 for single motors), low noise external rotor EC motor. Speed control through a 0-10V or PWM signal. Single-phase 230V 50/60Hz power supply for models 3015 to 6040 and three-phase 400V 50/60Hz for sizes 7050 and 8060. IP44 motor and class B insulation.
- Supplied with a filtration stage ISO COARSE \geq 60% (G4) or 2 stages ISO COARSE \geq 60% (G4) and ISO ePM1 \geq 50% (F7). Easily accessible inspection and cleaning register.

◦ Applications

- Designed for duct installation, they are indicated for:
- Air renovations in bathrooms and small rooms.
 - Perfect for false ceiling installation.
 - Working temperature range from -20°C to 60°C.

SB & SBC-3 EEC RANGE



◦ Accessories

	INT Safety switch.		REGC Speed controller for EEC motors.		PMR Speed controller with safety switch for EEC engine.
	CFF Filter cells with FiberPlast frame.		CFGF Cell filter with galvanized frame.		CHEF High efficiency, rigid and compact filters.
	VISC Circular outdoor flange with bird guard (SBC-3 EEC).		VIS Outdoor flange with bird guard (SB-3 EEC).		TEJ SB-3 EEC Weather protective roof for SB-3 EEC & SBC-3 EEC & VARIANTS.

◦ Filters

◦ CFF

Filter cells with FiberPlast frame



ISO COARSE ≥60% (G4)

Code	Dimensions (mm)	Application	Rat. Air flow m ³ /h	Initial Press. Loss (Pa)
FILTG04005	295x145x24	SB-3 FILTER 3015 EEC & PLUS & SBC-3 FILTER 125 EEC & PLUS	400	57
FILTG04006	395x198x24	SB-3 FILTER 4020 EEC & PLUS & SBC-3 FILTER 150-160 EEC & PLUS	600	57
FILTG04007	495x348x24	SB-3 FILTER 5035 EEC & PLUS & SBC-3 FILTER 200-250-315 EEC & PLUS	1300	57

◦ CFGF

Cell filter with galvanized frame



ISO COARSE ≥60% (G4)

Code	Dimensions (mm)	Application	Rat. Air flow m ³ /h	Initial Press. Loss (Pa)
FILTF04008	594x394x48	SB-3 FILTER 6040 EEC & PLUS & SBC-3 FILTER 355 EEC & PLUS	2250	60
FILTF04009	694x496x48	SB-3 FILTER 7050 EEC & PLUS & SBC-3 FILTER 400-450 EEC & PLUS	3300	60
FILTF04010	794x598x48	SB-3 FILTER 8060 EEC & PLUS & SBC-3 FILTER 500-560 EEC & PLUS	4550	60

◦ CHEF

High efficiency, rigid and compact filters



ePM1≥50% (F7)

Code	Dimensions (mm)	Application	Rat. Air flow m ³ /h	Initial Press. Loss (Pa)
FILTF07018	295x145x24	SB-3 FILTER 3015 EEC & PLUS & SBC-3 FILTER 125 EEC & PLUS	200	90
FILTF07019	395x198x24	SB-3 FILTER 4020 EEC & PLUS & SBC-3 FILTER 150 EEC & PLUS	350	90
FILTF07020	495x348x24	SB-3 FILTER 5035 EEC & PLUS & SBC-3 FILTER 200 EEC & PLUS	700	90
FILTF07021	594x394x48	SB-3 FILTER 6040 EEC & PLUS & SBC-3 FILTER 355 EEC & PLUS	1700	90
FILTF07022	694x496x48	SB-3 FILTER 7050 EEC & PLUS & SBC-3 FILTER 400 EEC & PLUS	2500	90
FILTF07023	794x598x48	SB-3 FILTER 8060 EEC & PLUS & SBC-3 FILTER 500 EEC & PLUS	3460	90

ePM1≥80% (F9)

FILTF09016	295x145x24	SB-3 FILTER 3015 EEC & PLUS & SBC-3 FILTER 125 EEC & PLUS	110	130
FILTF09017	395x198x24	SB-3 FILTER 4020 EEC & PLUS & SBC-3 FILTER 150 EEC & PLUS	200	130
FILTF09018	495x348x24	SB-3 FILTER 5035 EEC & PLUS & SBC-3 FILTER 200 EEC & PLUS	450	130
FILTF09019	594x394x48	SB-3 FILTER 6040 EEC & PLUS & SBC-3 FILTER 355 EEC & PLUS	1140	130
FILTF09020	694x496x48	SB-3 FILTER 7050 EEC & PLUS & SBC-3 FILTER 400 EEC & PLUS	1700	130
FILTF09021	794x598x48	SB-3 FILTER 8060 EEC & PLUS & SBC-3 FILTER 500 EEC & PLUS	2350	130



VORTICE GROUP COMPANIES

VORTICE S.P.A

Strada Cerca, 2
Frazione di Zoate
20067 Tribiano
(Milan) Italy
Tel. (+39) 02 906991
Fax (+39) 02 90699625
vortice.com

VORTICE LIMITED

Beeches House-Eastern
Avenue Burton upon Trent
DE13 0BB United Kingdom
Tel. (+44) 1283 492949
Fax (+44) 1283 544121
vortice.ltd.uk

VORTICE INDUSTRIAL S.R.L.

Via B. Brugnoli 3,
37063 Isola della Scala
(Verona) Italy
Tel. (+39) 045 6631042
Fax (+39) 045 6631039
vorticeindustrial.com

CASALS VENTILACIÓN AIR INDUSTRIAL S.L.

Ctra. Camprodon, s/n 17860
Sant Joan de les
Abadesses
(Girona) Spain
Tel. (+34) 972720150
casals.com

VORTICE LATAM S.A.

Bodega #6
Zona Franca Este Alajuela,
Alajuela 20101
Costa Rica
Tel. (+506) 2201 6934
vortice-latam.com

VORTICE VENTILATION SYSTEM

(Changzhou) Co.LTD
No. 388 West Huanghe Road
Building 19, Changzhou
Post Code: 213000 China
Tel. (+86) 0519 88990150
Fax (+86) 0519 88990151
vortice-china.com

The descriptions and illustrations in this catalogue are intended to be indicative and not binding. Without prejudice to the essential characteristics of the products described and illustrated here, CASALS VENTILACIÓN reserves the right to make, at any time and without notice, changes to parts, aesthetic details or supply of accessories to its products that are deemed to be appropriate for improvement or for any construction or commercial requirement.

This printout completely cancels and replaces all the previous ones.