



50/60Hz

KENTALFAN

PLUG FAN WITH IEC MOTOR

www.casals.com



casals
fans of innovation

50Hz
KENTALFAN

PLUG FAN WITH IEC MOTOR

KENTALFAN



ADVANTAGE

- ✓ KENTALFAN is a plug fan with **IEC** motor.
- ✓ Available in different impeller sizes from **Ø315** to **Ø630** mm.
- ✓ **Latest generation impeller** made of galvanized sheet metal with built-in diffuser to increase efficiency.
- ✓ Complies with the ecodesign requirements set by **ErP 2022**, thus advancing what the law indicates.

RANGE AND FLOW RATE SUMMARY

- ✓ Available sizes: impellers from **Ø315 to 630**
- ✓ Maximum flow rates: **22.300 m³/h**
- ✓ Maximum pressures: **1200 Pa**

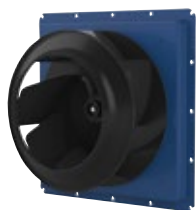
APPLICATIONS

- ✓ Ventilation boxes
- ✓ Grid installation to easily obtain greater benefits
- ✓ Heat recovery units
- ✓ UTA's
- ✓ Filtration units
- ✓ Industrial machinery (refrigeration or air movement, extraction and supply)
- ✓ Air heaters
- ✓ Purifiers
- ✓ Roof extractors

PLUG FANS RANGE



- ✓ Take a look at the rest of the Casals plug fan range. Click on each product to see the full data sheet.



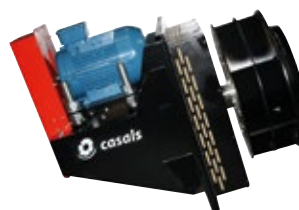
CIKSTORM

- ✓ Backward centrifugal plug fan for industrial applications



CLIBOS

- ✓ Backward centrifugal plugfan for hot gas recirculation



CLIBOS-TR

- ✓ Belt driven backward centrifugal fan for high temperature



ENKELFAN EEC

- ✓ Backward centrifugal plug fan with EEC motor for industrial application

TECHNICAL DATA SHEET

MANUFACTURING FEATURES

- Medium size plug fan available from Ø315mm to Ø630mm.
- It offers flows up to 22.300 m³/h and pressures up to 1200Pa.
- Latest generation impeller made of galvanized sheet metal with built-in diffuser to increase efficiency. Self-cleaning impeller with backward curved (reaction) blades, high performance and single inlet, direct driven. Dynamically balanced to minimize noise and vibration.
- Galvanized sheet metal structure for small sizes up to Ø400mm, and the rest of the models in pickled sheet metal painted with black epoxy polyester.
- IEC standard asynchronous squirrel cage motor with IP-55 protection and class F electrical insulation. Standard voltages 230/400V 50Hz for three-phase motors up to 4kW and 400/690V 50Hz for higher powers.
- Maximum continuous working temperature: 60°C.
- System prepared to comply with future European efficiency regulations (ErP).

UNDER REQUEST

- Other possible fabrications up to 100°C and up to IP66.

THREE PHASE RANGE

Code	Model	R.P.M.	Rated I (A)		Rated Power kW	Air flow m ³ /h	Sound dB (A) **	Weight Kg
			230V	400V				
248312106	KENTALFAN 315 T2 1,1kW	2800	4,05	2,33	1,1	5.010	59	16
248314106	KENTALFAN 315 T4 0,25kW	1400	1,38	0,79	0,25	2.510	43	15
248354106	KENTALFAN 355 T4 0,25kW	1400	1,38	0,79	0,25	3.560	45	17
248404106	KENTALFAN 400 T4 0,55kW	1440	2,57	1,49	0,55	5.300	48	26
248454106	KENTALFAN 450 T4 1,1kW	1450	4,33	2,49	1,1	7.670	52	33
248504106	KENTALFAN 500 T4 1,5kW	1450	5,67	3,26	1,5	10.190	55	52
248564106	KENTALFAN 560 T4 3kW	1420	10,7	6,17	3	14.620	55	62
248634106	KENTALFAN 630 T4 5,5kW	960	-	12,8	5,5	22.280	60	82

** Total sound pressure level at the point of maximum flow measured in dB(A) radiated, measured in free field at a distance of 6m from the source.

KENTALFAN



Ø315-400

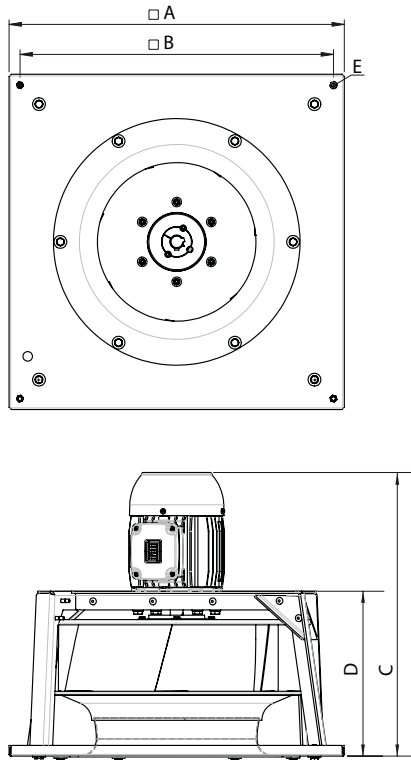


Ø450-630



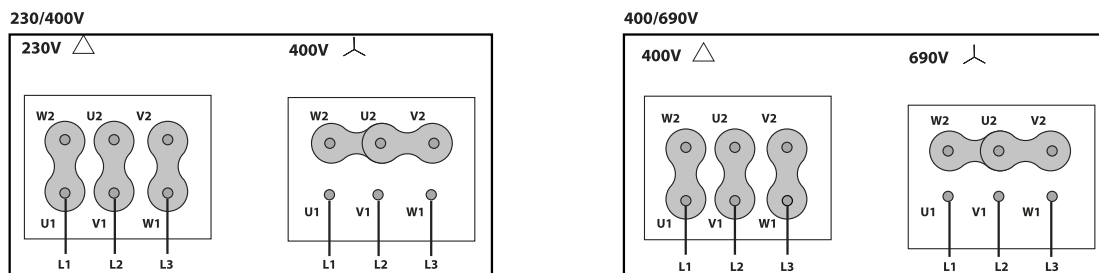
✓ Click on each picture to see the product in our selection software.

| DIMENSIONS DIAGRAM



MODEL	A	B	C	D	E
KENTALFAN 315 T2 1,1kW	450	410	448.2	227.4	M8
KENTALFAN 315 T4 0,25kW	450	410	422.4	227.4	M8
KENTALFAN 355 T4 0,25kW	500	460	445.8	250.8	M8
KENTALFAN 400 T4 0,55kW	560	520	506.65	282.55	M8
KENTALFAN 450 T4 1,1kW	631	590	533.05	310.05	M8
KENTALFAN 500 T4 1,5kW	711	670	566.95	310.05	M8
KENTALFAN 560 T4 3kW	801	760	667.55	386.85	M10
KENTALFAN 630 T4 5,5kW	901	860	794.35	421.55	M10

| WIRING DIAGRAM



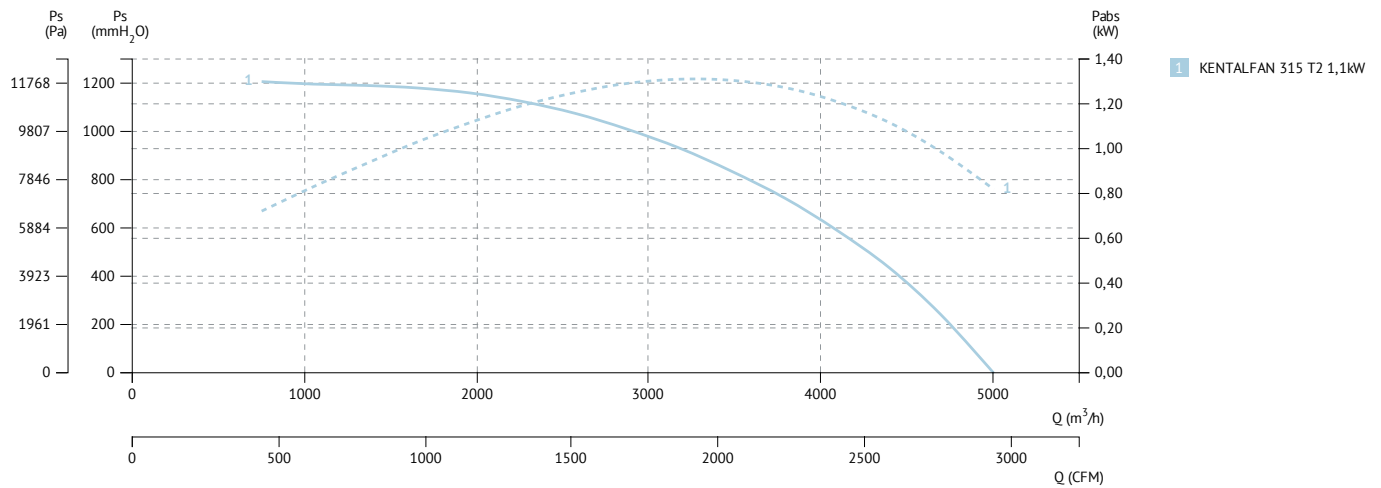
| SOUND DATA

MODEL	* Sound power Lw dB (A)								
	63 Hz	125 Hz	250 Hz	500 Hz	1000 Hz	2000 Hz	4000 Hz	8000 Hz	Total
KENTALFAN 315 T2 1,1kW	68	72	82	79	76	79	80	65	85
KENTALFAN 315 T4 0,25kW	52	56	66	63	59	63	63	48	69
KENTALFAN 355 T4 0,25kW	56	66	64	64	62	69	56	50	71
KENTALFAN 400 T4 0,55kW	59	70	68	67	66	72	59	54	74
KENTALFAN 450 T4 1,1kW	63	71	70	71	70	76	62	56	78
KENTALFAN 500 T4 1,5kW	67	74	74	75	73	79	66	60	81
KENTALFAN 560 T4 3kW	87	81	81	80	80	75	64	62	81
KENTALFAN 630 T4 5,5kW	92	85	85	84	84	81	68	66	86

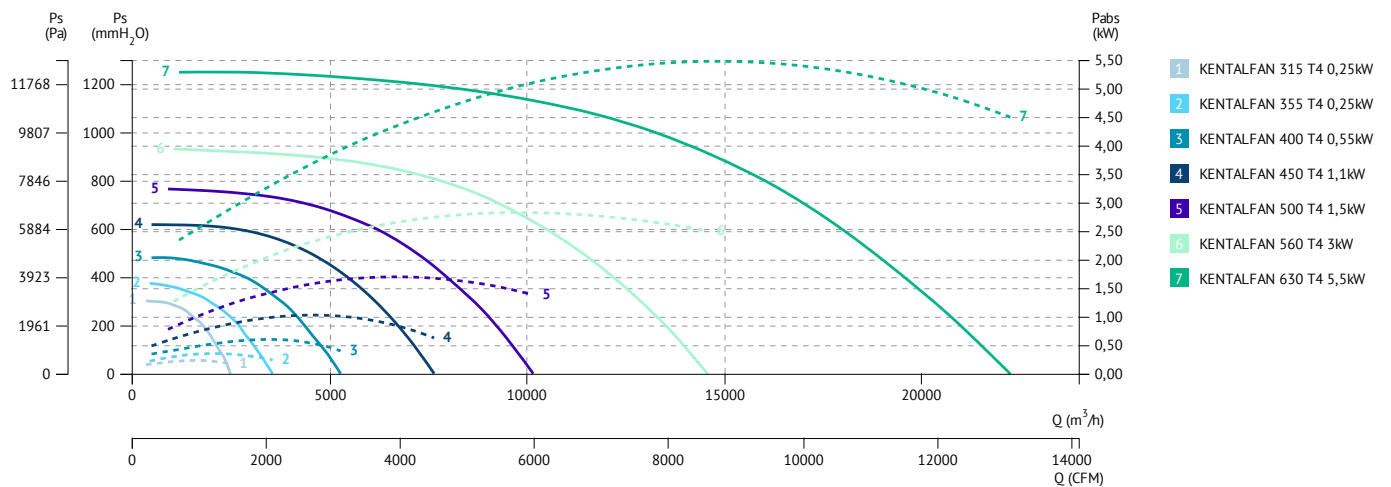
* Total sound pressure level at the point of maximum flow measured in dB(A) radiated, measured in free field at a distance of 6m from the source.

| CHARACTERISTIC CURVES

2 POLE / 2 polos

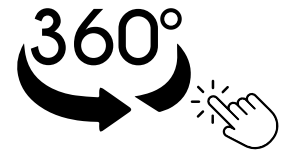


4 POLE / 4 polos

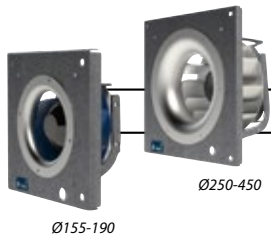


360° VIEW

✓ Click on the picture to see the product in 360° view with an Internet navigator.

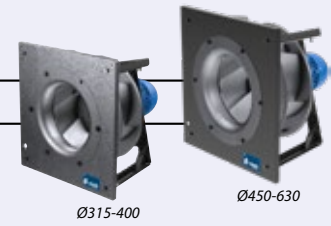


WHICH IS THE DIFFERENCE BETWEEN ENKELFAN EEC AND KENTALFAN?



ENKELFAN EEC

- **Small** size plug type fan.
- **EEC** electronic motor.
- Sizes from **Ø155 to Ø450** mm.
- Maximum flow rates up to **7.000 m³/h**.
- Pressures up to **500 Pa**.



KENTALFAN

- **Medium** size plug type fan.
- **IEC** motor.
- Sizes from **Ø315 to Ø630** mm.
- Maximum flow rates up to **22.300 m³/h**.
- Pressures up to **1200 Pa**.



IMPELLER

• Reinforced **polyamide** impeller for **models Ø155 -190** and **aluminium** plate for the rest of the models **Ø250-450**.

• **Latest generation impeller** made of **galvanized** sheet metal with built-in diffuser to increase efficiency.

ESTRUCTURA

• **Galvanized** sheet metal structure.

• Structure in **galvanized** sheet metal for **small sizes up to Ø400mm**, and all **other models in black epoxy-polyester painted** sheet metal.



MOTOR

• **EC** external rotor motor with **high efficiency and low noise level**. Speed control through a 0-10V or PWM signal. Single-phase 230V 50/60Hz power supply for models 155 to 310 and three-phase 400V 50/60Hz for sizes Ø355 and Ø450. IP44 motor and class B insulation.

• **IEC** standard asynchronous squirrel cage motor with IP-55 protection and class F electrical insulation. Standard voltage 230/400V 50/60 Hz for three-phase motors up to 4kW and 400/690V 50/60 Hz for higher powers.

60Hz
KENTALFAN



casals
fans of innovation

PLUG FAN WITH IEC MOTOR

KENTALFAN



ADVANTAGE

- ✓ KENTALFAN is a plug fan with **IEC** motor.
- ✓ Available in different impeller sizes from **Ø315** to **Ø630** mm.
- ✓ **Latest generation impeller** made of galvanized sheet metal with built-in diffuser to increase efficiency.
- ✓ Complies with the ecodesign requirements set by **ErP 2022**, thus advancing what the law indicates.

RANGE AND FLOW RATE SUMMARY

- ✓ Available sizes: impellers from **Ø315 to 630**
- ✓ Maximum flow rates: **10,300 CFM**
- ✓ Maximum pressures: **1100 Pa**

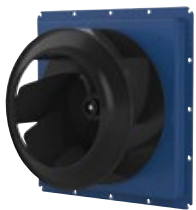
APPLICATIONS

- ✓ Ventilation boxes
- ✓ Grid installation to easily obtain greater benefits
- ✓ Heat recovery units
- ✓ UTA's
- ✓ Filtration units
- ✓ Industrial machinery (refrigeration or air movement, extraction and supply)
- ✓ Air heaters
- ✓ Purifiers
- ✓ Roof extractors

PLUG FANS RANGE



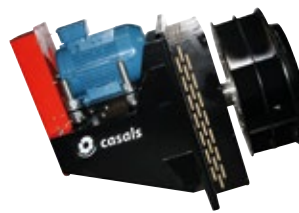
- ✓ Take a look at the rest of the Casals plug fan range. Click on each product to see the full data sheet.

**CIKSTORM**

- ✓ Backward centrifugal plug fan for industrial applications

**CLIBOS**

- ✓ Backward centrifugal plugfan for hot gas recirculation

**CLIBOS-TR**

- ✓ Belt driven backward centrifugal fan for high temperature

**ENKELFAN EEC**

- ✓ Backward centrifugal plug fan with EEC motor for industrial application

TECHNICAL DATA SHEET

MANUFACTURING FEATURES

- Medium size plug fan available from Ø315mm to Ø630mm.
- It offers flows up to 21.000m³/h and pressures up to 1200Pa.
- Latest generation impeller made of galvanized sheet metal with built-in diffuser to increase efficiency. Self-cleaning impeller with backward curved (reaction) blades, high performance and single inlet, direct driven. Dynamically balanced to minimize noise and vibration.
- Galvanized sheet metal structure for small sizes up to Ø400mm, and the rest of the models in pickled sheet metal painted with black epoxy polyester.
- IEC standard asynchronous squirrel cage motor with IP-55 protection and class F electrical insulation. Standard voltages 230/400V 60Hz for three-phase motors up to 4kW and 400/690V 60Hz for higher powers.
- Maximum continuous working temperature: 60°C.
- System prepared to comply with future European efficiency regulations (ErP).

UNDER REQUEST

- Other possible fabrications up to 100°C and up to IP66.

THREE PHASE RANGE

Code	Model	R.P.M.	Rated I (A)		Rated Power kW	Air flow m³/h	Sound dB (A) **	Weight Kg
			230V	400V				
248314206	KENTALFAN 315 T4 0,25kW	1680	1.38	0.79	0.25	1,76	47	15
248354206	KENTALFAN 355 T4 0,55kW	1680	2.57	1.49	0.55	2,613	49	17
248404206	KENTALFAN 400 T4 1,1kW	1670	4.33	2.49	1.10	3,673	53	29
248454206	KENTALFAN 450 T4 2,2kW	1680	8.07	4.64	2.20	5,444	56	34
248504206	KENTALFAN 500 T4 3kW	1680	10.7	6.17	3.00	7,145	60	52
248566206	KENTALFAN 560 T6 1,5kW	1128	6.45	3.71	1.50	6,786	50	62
248636206	KENTALFAN 630 T6 3kW	1152	12.7	7.3	3.00	10,335	55	82

** Total sound pressure level at the point of maximum flow measured in dB(A) radiated, measured in free field at a distance of 6m from the source.

KENTALFAN



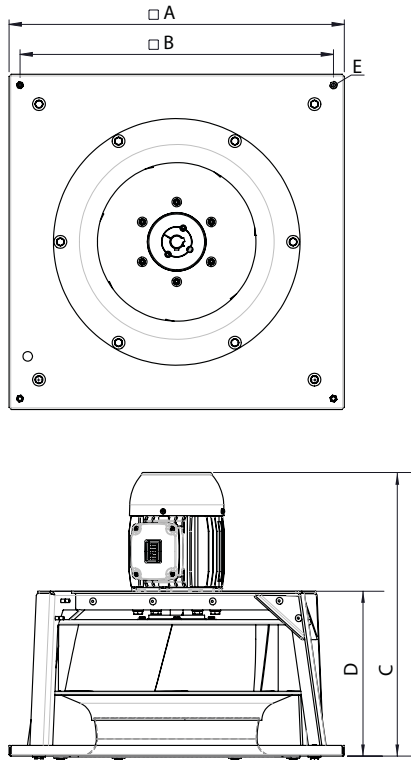
Ø315-400

Ø450-630



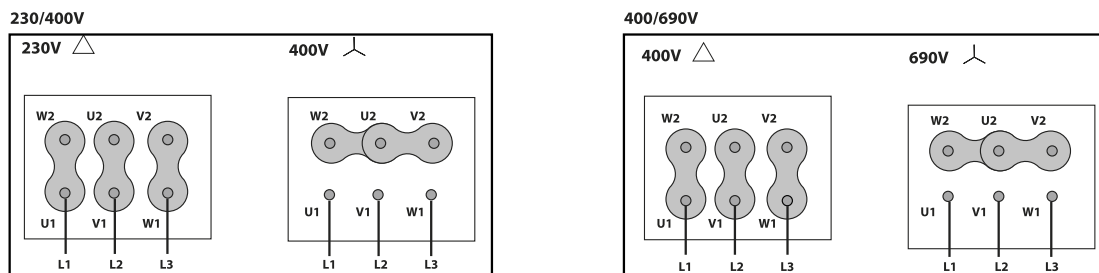
✓ Click on the picture icon to see the product in our selection software.

| DIMENSIONS DIAGRAM



MODEL	A	B	C	D	E
KENTALFAN 315 T4 0,25kW	450	410	422.4	227.4	M8
KENTALFAN 355 T4 0,55kW	500	460	461.8	250.8	M8
KENTALFAN 400 T4 1,1kW	560	520	552.15	282.55	M8
KENTALFAN 450 T4 2,2kW	631	590	558.04	310.05	M8
KENTALFAN 500 T4 3kW	711	670	623.35	346.25	M10
KENTALFAN 560 T6 1,5kW	801	760	667.55	386.85	M10
KENTALFAN 630 T6 3kW	901	860	794.35	421.55	M10

| WIRING DIAGRAM



| SOUND DATA

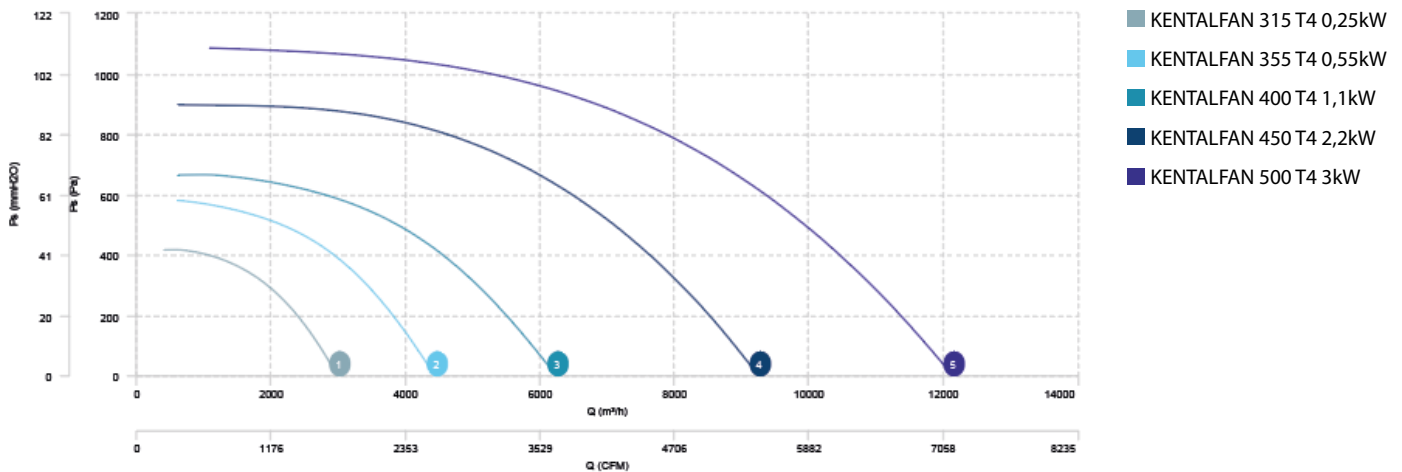
MODEL	* Sound power Lw dB (A)								
	63 Hz	125 Hz	250 Hz	500 Hz	1000 Hz	2000 Hz	4000 Hz	8000 Hz	Total
KENTALFAN 315 T4 0,25kW	56	60	70	67	64	67	68	53	73
KENTALFAN 355 T4 0,55kW	60	71	69	68	67	73	60	55	75
KENTALFAN 400 T4 1,1kW	63	74	72	72	70	77	64	58	79
KENTALFAN 450 T4 2,2kW	68	75	75	76	74	80	67	61	82
KENTALFAN 500 T4 3kW	71	78	78	79	77	84	70	64	86
KENTALFAN 560 T6 1,5kW	82	75	76	75	74	70	59	57	76
KENTALFAN 630 T6 3kW	87	80	80	79	78	75	63	60	81

* Total sound pressure level at the point of maximum flow measured in dB(A) radiated, measured in free field at a distance of 6m from the source.

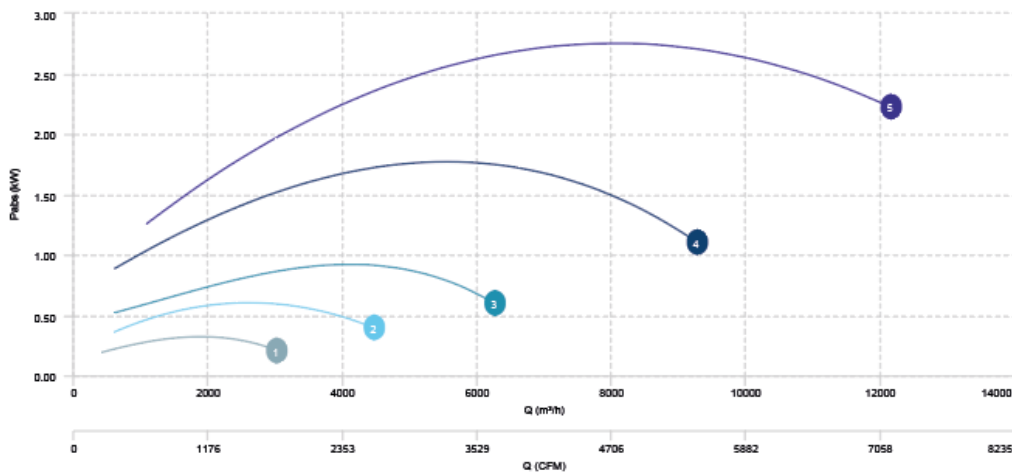
| CHARACTERISTIC CURVES

4 POLE / 4 polos

CAUDAL-PRESIÓN

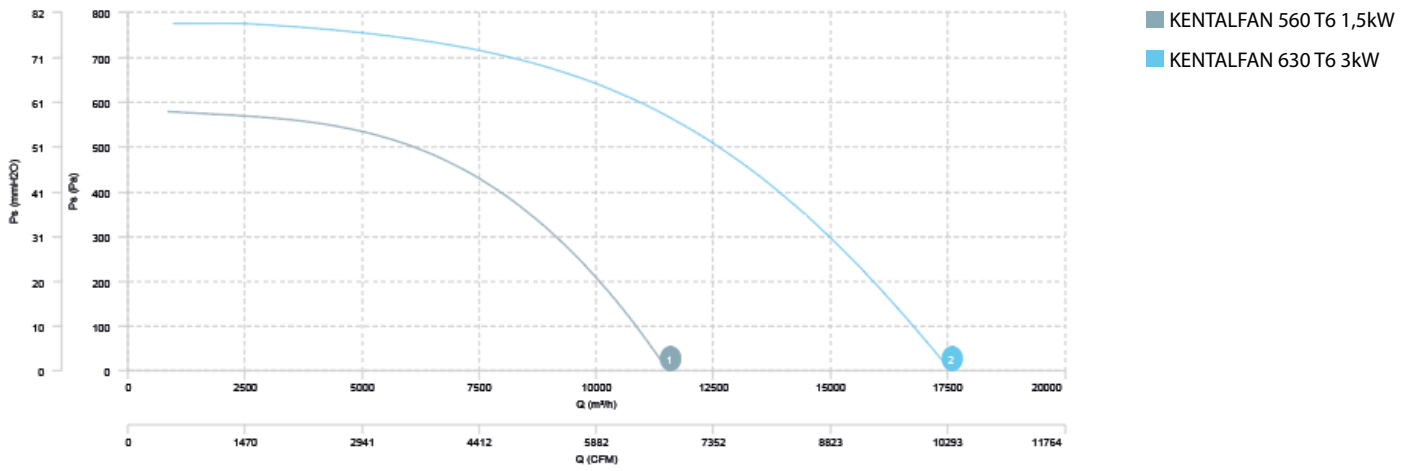


CAUDAL-POTENCIA ABSORBIDA

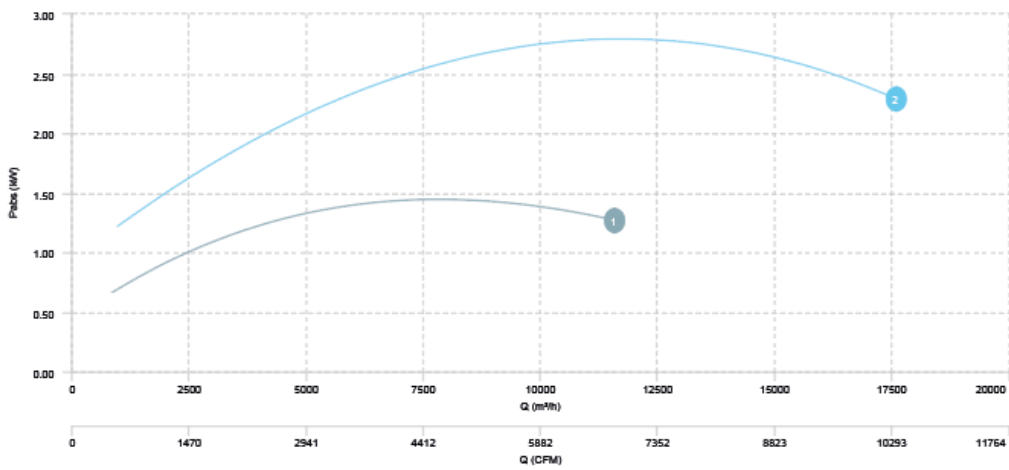


6 POLE / 6 polos

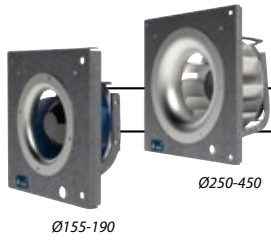
CAUDAL-PRESIÓN



CAUDAL-POTENCIA ABSORBIDA

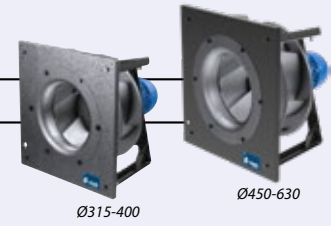


WHICH IS THE DIFFERENCE BETWEEN ENKELFAN EEC AND KENTALFAN?



ENKELFAN EEC

- **Small** size plug type fan.
 - **EEC** electronic motor.
- Sizes from **Ø155 to Ø450** mm.
- Maximum flow rates up to **4,120 CFM**.
- Pressures up to **500 Pa**.



KENTALFAN

- **Medium** size plug type fan.
 - **IEC** motor.
- Sizes from **Ø315 to Ø630** mm.
- Maximum flow rates up to **10,300 CFM**
- Pressures up to **1100 Pa**.



IMPELLER

• Reinforced **polyamide** impeller for **models Ø155 -190** and **aluminium** plate for the rest of the models **Ø250-450**.

• **Latest generation impeller** made of **galvanized** sheet metal with built-in diffuser to increase efficiency.

ESTRUCTURA

• **Galvanized** sheet metal structure.

• Structure in **galvanized** sheet metal for **small sizes up to Ø400mm**, and all **other models in black epoxy-polyester painted** sheet metal.



MOTOR

• **EC** external rotor motor with high efficiency and low noise level. Speed control through a 0-10V or PWM signal. Single-phase 230V 50/60Hz power supply for models 155 to 310 and three-phase 400V 50/60Hz for sizes 355 and 450. IP44 motor and class B insulation.

• **IEC** standard asynchronous squirrel cage motor with IP-55 protection and class F electrical insulation. Standard voltage 230/400V 50/60 Hz for three-phase motors up to 4kW and 400/690V 50/60 Hz for higher powers.



VORTICE GROUP COMPANIES

VORTICE S.P.A

Strada Cerca, 2
Frazione di Zoate
20067 Tribiano
(Milan) Italy
Tel. (+39) 02 906991
Fax (+39) 02 90699625
vortice.com

VORTICE LIMITED

Beeches House-Eastern
Avenue Burton upon Trent
DE13 0BB United Kingdom
Tel. (+44) 1283 492949
Fax (+44) 1283 544121
vortice.ltd.uk

VORTICE INDUSTRIAL S.R.L.

Via B. Brugnoli 3,
37063 Isola della Scala
(Verona) Italy
Tel. (+39) 045 6631042
Fax (+39) 045 6631039
vorticeindustrial.com

CASALS VENTILACIÓN AIR INDUSTRIAL S.L.

Ctra. Camprodon, s/n 17860
Sant Joan de les
Abadesses
(Girona) Spain
Tel. (+34) 972720150
casals.com

VORTICE LATAM S.A.

Bodega #6
Zona Franca Este Alajuela,
Alajuela 20101
Costa Rica
Tel. (+506) 2201 6934
vortice-latam.com

VORTICE VENTILATION SYSTEM

(Changzhou) Co.LTD
No. 388 West Huanghe Road
Building 19, Changzhou
Post Code: 213000 China
Tel. (+86) 0519 88990150
Fax (+86) 0519 88990151
vortice-china.com

The descriptions and illustrations in this catalogue are intended to be indicative and not binding. Without prejudice to the essential characteristics of the products described and illustrated here, CASALS reserves the right to make, at any time and without notice, changes to parts, aesthetic details or supply of accessories to its products that are deemed to be appropriate for improvement or for any construction or commercial requirement.

This printout completely cancels and replaces all the previous ones