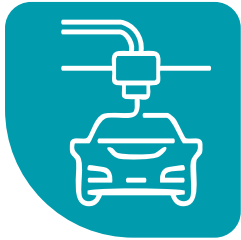


Paint booth & ovens

Fans for paint booth and ovens

INDUSTRIAL FANS

PAINT BOOTH & OVENS



◦ **Generating Overpressure**

In typical body shop paint booths, the painting process is carried out using overpressure. In these booths, fans are responsible for supplying air mechanically, which is usually filtered in a plenum, in order to push paint particles downward. In this way, the paint particles that do not adhere are collected in a collector, and the air, once again filtered, is naturally discharged to the outside through a duct.



◦ **Particle Extraction**

In paint booths, medium-pressure fans can also be used to recover paint particles that have not adhered to the product, returning them to the hopper so they can be reused in the next painting process.



◦ **Destratification and Recirculation of Hot Gases**

In the case of electrostatic paint booths, where the product passes through a drying oven after being painted, air destratification is necessary to ensure a uniform oven temperature. This is achieved by fans such as CLIBOS and CLIBOS-TR, which recirculate hot gases at temperatures of up to 250°C (CLIBOS) or 350°C (CLIBOS-TR).



◦ CLIBOS



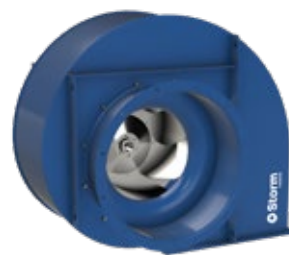
◦ CLIBOS-TR



◦ HH-2



◦ PRESTUR



◦ PREXTUR