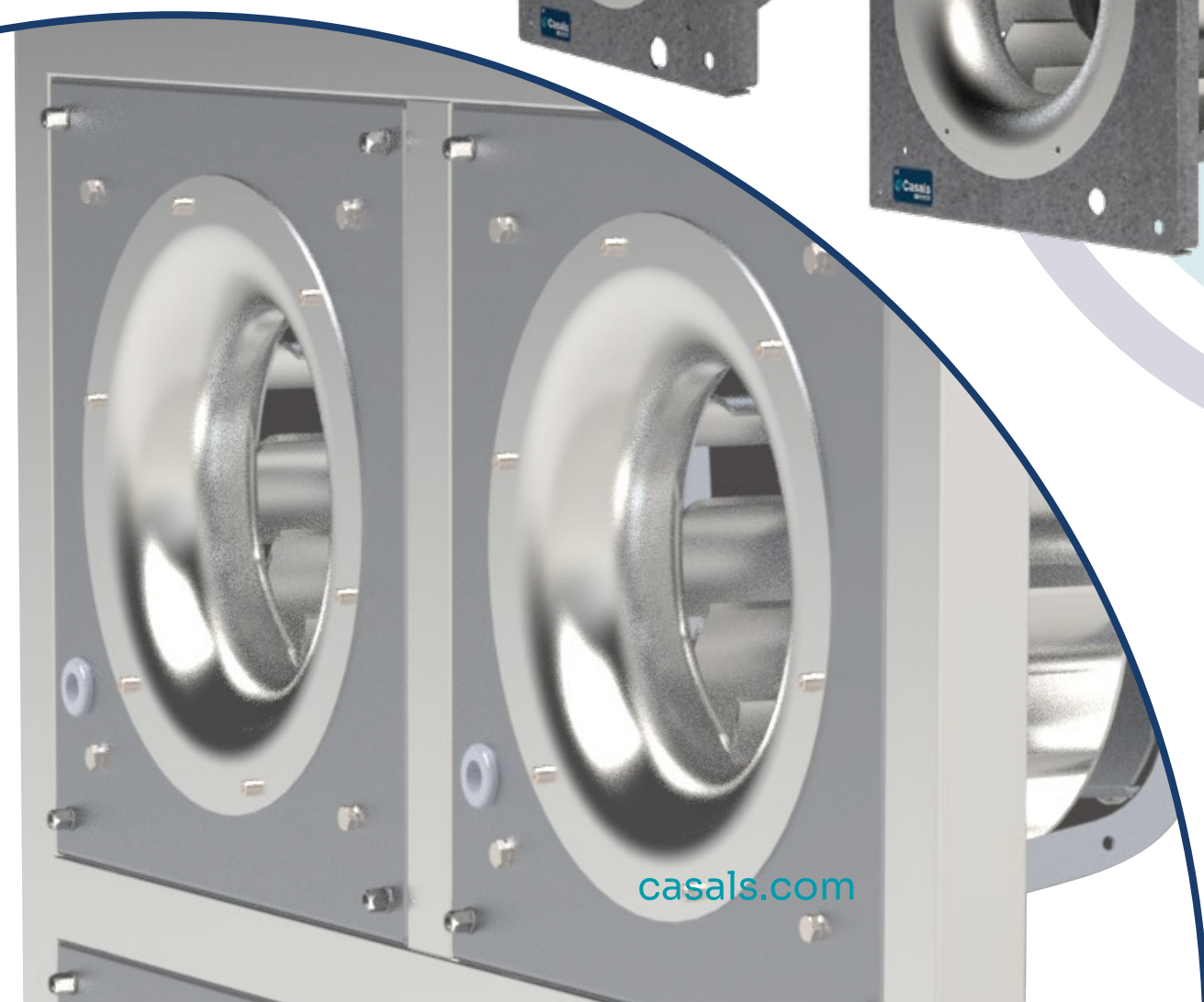
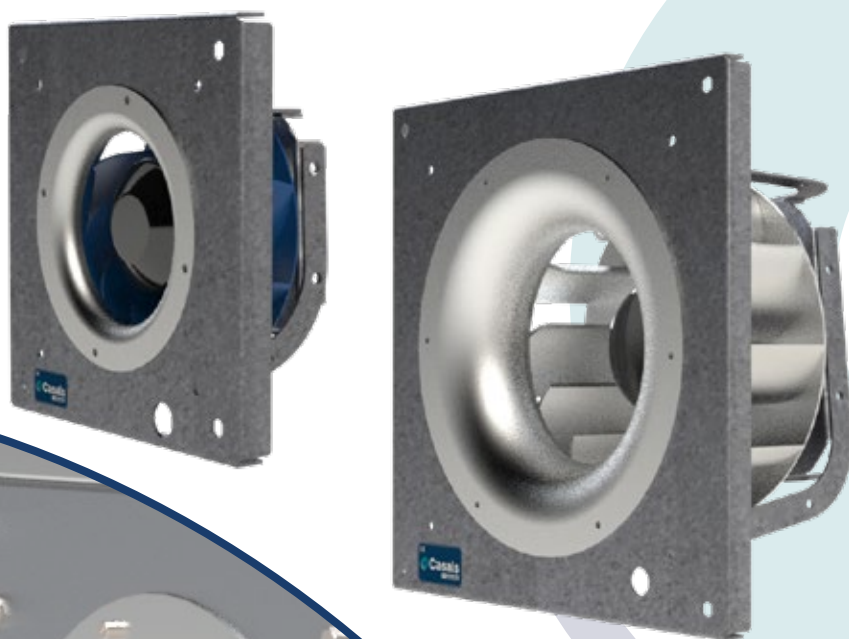


# ENKELFAN EEC

HIGHLY EFFICIENT PLUG FAN  
WITH ELECTRONIC MOTOR

INDUSTRIAL AND TERTIARY



HIGHLY EFFICIENT PLUG FAN WITH  
ELECTRONIC MOTOR

# ENKELFAN EEC



## EFFICIENT AND COMPACT VENTILATION

- Power, efficiency, and versatility come together in the ENKELFAN EEC, a plug fan with an electronic EEC motor.
- Its advanced design makes it an ideal solution for **integration** into ventilation systems that require **high performance and energy efficiency**.

## KEY ADVANTAGES

- 100% adjustable to suit any requirement.
- High energy efficiency thanks to its EC motor.
- Compact and lightweight, easy to integrate with plug & play.
- Complies with **ErP 2022** regulations, ensuring responsible consumption.
- Available in **6 sizes**: Ø 155 - 190 - 250 - 310 - 355 - 450.
- Scalable solution: parallel **(grid) installation for greater airflow**.



Parallel installation example of an ENKELFAN EEC

Read more about retrofit  
systems here ▶



## APPLICATIONS

ENKELFAN EEC is the perfect solution for a wide variety of applications:

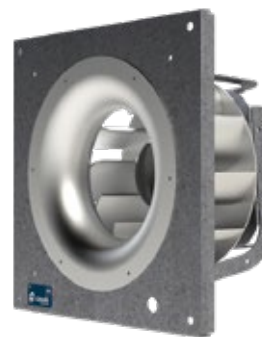
- Ventilation boxes
- Air handling units (AHUs)
- Heat recovery units
- Air filtration and purification
- Industrial machinery: cooling, extraction, and air supply
- Air heaters and rooftop extractors
- Integration into HVAC systems and plenums

## MANUFACTURING FEATURES

- Self-cleaning** impeller with backward-curved blades for maximum performance.
- Durable materials: **reinforced polyamide** (Ø155-190) and **aluminium sheet** (Ø250-450).
- EC external rotor motor**, quiet and highly efficient.
- Power supply: Single-phase 230V (Ø155-310) | Three-phase 400V (Ø355-450).
- Speed control: **0-10V signal or PWM**.
- Operating temperature range: -20°C to 60°C.
- Available airflows: from **460 to 7.000 m³/h**



ENKELFAN EEC  
Ø155-190



ENKELFAN EEC  
Ø250-450

Access the full technical sheet in our  
free Fanware selection software

