

ENKELROOF EEC & KENTALROOF

Roof fan, ABS & aluminum cowl

ROOF FANS &
ACCESSORIES



° KENTALROOF CONFORT

° KENTALROOF-A CONFORT

ROOF FAN WITH HINGED SYSTEM AND ABS & ALUMINIUM COWL



KENTALROOF CONFORT



KENTALROOF-A CONFORT

° Standard voltages **230V 50Hz and 60Hz for single phase motors**, 230/400V 50Hz and 60Hz for three phase motors up to 4kW & 400/690V 50Hz and 60Hz for higher powers and 400V 50Hz and 60Hz for 2 speed motors.



° KENTALROOF F400

° KENTALROOF-A F400

OUTSIDE FANS WITH HINGED SYSTEM AND ABS & ALUMINIUM COWL F400



KENTALROOF F400



KENTALROOF-A F400

° Standard voltages **230/400V 50Hz and 60Hz for three phase motors up to 4kW & 400/690V 50Hz and 60Hz for higher powers** and 400V 50Hz and 60Hz for 2 speed motors.



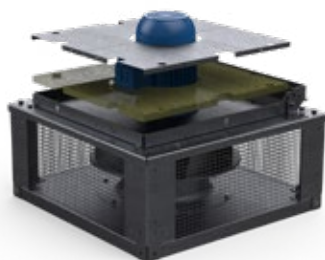
0370
**ENKELROOF &
ENKELROOF-A F400**
Certification:
0370-CPR-7343

° KENTALROOF-A 120°C EN CONTINUO

120°C EN CONTINUOUS WITH HINGED SYSTEM AND ABS & ALUMINIUM COWL



KENTALROOF-A 120°C EN CONTINUO



120°C
...

° Maximum continuous working temperature: **transported air 120°C.**



ROOF FAN, ABS & ALUMINIUM COWL

° ENKELROOF & ENKELROOF-A EEC

- ✓ Great watertightness against rain thanks to the rounded design of the cowl.
- ✓ Plug fan core with EC synchronous outer rotor motor.
- ✓ Being synchronous, the efficiency is much higher.
- ✓ Ease of installation and maintenance of the machine.



ENKELROOF EEC



ENKELROOF-A EEC

MANUFACTURING FEATURES

° ABS protection cowl (ENKELROOF EEC) and in anticorrosive treated aluminum (ENKELROOF-A EEC) easily removable for access to motor and impeller (integrated folding system in models 500, 560 and 630). The ABS cowl is characterized by its toughness, resistance to impacts and is able to withstand extreme ambient temperatures. 100% of the ABS used in the this cowl is recycled.

° The design of the cowl with a rounded shape is specific to minimize the risk of water ingress due to rain.

° Structure in anticorrosive galvanized steel and support frame for adaptation to the roof with anti-bird protection grid.

° High-efficiency backward-curved blade impeller with self-cleaning system. Self-cleaning system. Reinforced polyamide impeller for models 155, 190 and 220. The rest of the models in aluminum.

° EC technology uses integral electronic control to ensure that the motor always runs at optimal load and ensures efficient energy utilization. It incorporates an external rotor EC motor with high efficiency (IE4 for three phase motors and IE5 for single motors) and low noise level. Speed control through a 0-10V or PWM signal. 230V 50/60Hz single-phase power supply for models 155 to 310 and 400V 50/60Hz three-phase power supply for sizes from 355 to 630. IP54 and motor class B insulation.

APPLICATION

Designed for deck or roof mounting, they are indicated for:

- ° Smoke extraction.
- ° Air renewal in all types of buildings and industries.
- ° Working temperature range from -20°C to 60°C for models size 155-310, -25°C to 60°C for 355-450 sizes, -30°C to 50°C for size 500 and -30°C to 40°C for 560 and 630 models.

UNDER REQUEST

° Fan (size between 250 and 450) with k-factor reading.



Technical data Fanware
ENKELROOF EEC



Technical data Fanware
ENKELROOF-A EEC



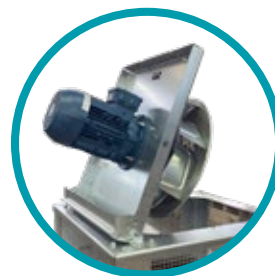
FAN WITH HINGED SYSTEM AND ABS COWL

° KENTALROOF & KENTALROOF-A

- ✓ Great watertightness against rain thanks to the rounded design of the cowl.
- ✓ Integrated hinged system.
- ✓ Ease of installation and maintenance of the machine.



KENTALROOF



HINGED SYSTEM



KENTALROOF-A

MANUFACTURING FEATURES

° ABS protection cowl (KENTALROOF) and in anti-corrosive treated aluminum (KENTALROOF-A) easily removable for access to motor and impeller thanks to the integrated folding system. The ABS cowl is characterized by its toughness, resistance to impacts and is able to withstand extreme ambient temperatures. 100% of the ABS used in the this cowl is recycled.

° The design of the cowl with a rounded shape is specific to minimize the risk of water ingress due to rain. Equipped with a hinged system to open the motor-impeller set. This system allows easy maintenance and cleaning of the set without the need to disassemble the entire structure. The opening is possible in 2 inclinations: approximately 45° and 90°, as required by the intervention.

° Structure in anticorrosive galvanized steel and support frame for adaptation to the roof with anti-bird protection grid.

° High-performance, backward-curved blade (reaction) impellers designed to work without scroll. Self-cleaning system, built in galvanized steel treated with anti-corrosion.

° Standard asynchronous squirrel cage motor with IP-55 protection and Class F insulation. Standard voltages 230V 50Hz and 60Hz for single phase motors, 230/400V 50Hz and 60Hz for three phase motors up to 4kW & 400/690V 50Hz and 60Hz for higher powers and 400V 50Hz and 60Hz for 2 speed motors.

APPLICATION

- ° Designed for deck or roof mounting, they are indicated for:
- ° Smoke extraction.
- ° Air renewal in all types of buildings and industries.
- ° Maximum continuous working temperature: transported air 80°C, ambient 50°C in single-phase motors and 60°C to -25°C in three-phase motors.

UNDER REQUEST

- ° Voltajes especiales.



Technical data Fanware
KENTALROOF



Technical data Fanware
KENTALROOF-A

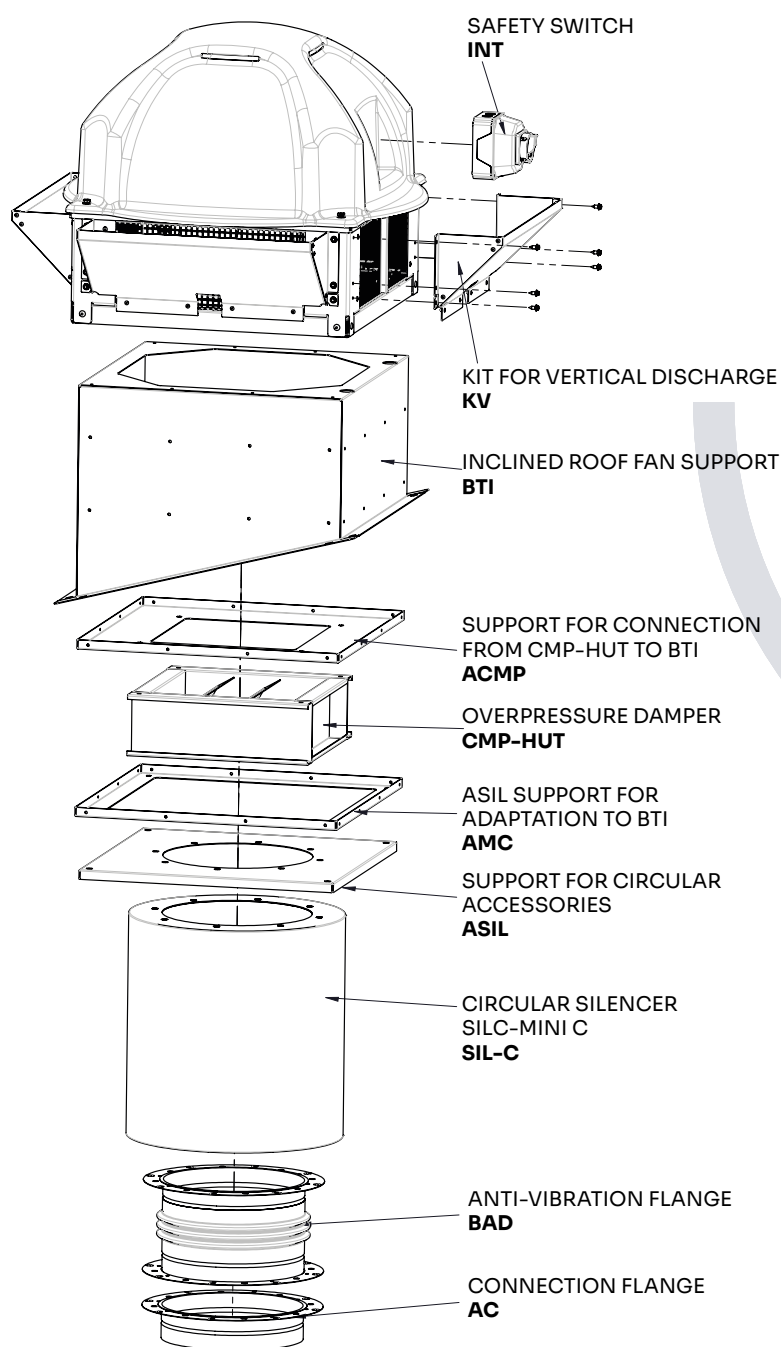


ACCESSORIES

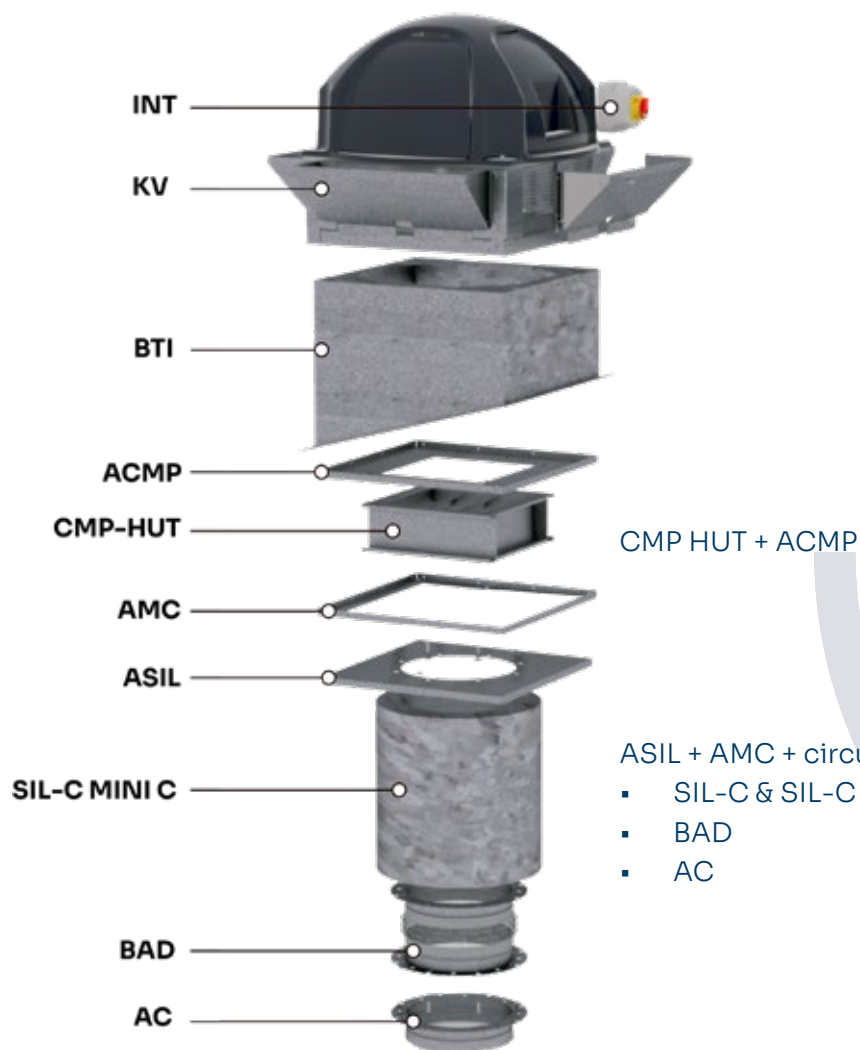
ENKELROOF EEC & KENTALROOF



There are several accessories for ENKELROOF EEC and KENTALROOF roof fans that can be combined with each other.



To install the overpressure damper, other accessories are needed that will allow the connection with the roof base. On the other hand, circular accessories need a specific support that matches the same diameter in order to fit into the installation. The table describes the list of accessories and the size for each fan model.



CONSIDERATIONS

The BTI base replaces the construction formwork and the fan rests on it. Unlike a formwork, the BTI allows the installation of several accessories.

The BTI can be flat or inclined to overcome the slope of the roof and this inclination must be indicated to the factory when placing the order.

In the case of adding a CMP-HUT damper, the BTI base will always be necessary together with the ACMP accessory.

In the case of needing circular accessories such as the silencer (SIL-C & SIL-C MINI C), the flange (AC) or the flexible flange (BAD), in addition to the BTI base, the AMC accessories will be necessary together with the ASIL of the appropriate diameter.

ENKELROOF & ENKELROOF-A EEC

Model	KV	BTI	CMP-HUT	ASIL	SIL	BAD	AC
ENKELROOF 150 EEC	KV ENKELROOF 150-190	BTI 310	-	ASIL 310-160	SILC-MINI 160 C	BAD 5	AC 175
ENKELROOF 190 EEC	KV ENKELROOF 150-190	BTI 310	-	ASIL 310-160	SILC-MINI 160 C	BAD 5	AC 175
ENKELROOF 220 EEC	KV ENKELROOF 220	BTI 410	-	ASIL 410-200	SILC-MINI 200 C	BAD 6	AC 200
ENKELROOF 250 EEC	KV ENKELROOF 250	BTI 410	-	ASIL 410-250	SILC-MINI 250 C	BAD 8	AC 250
ENKELROOF 315 EEC	KV ENKELROOF 315	BTI 570	CMP-HUT 300x310	ASIL 570-315	SILC-MINI 315 C	BAD 9	AC 300
ENKELROOF 355 EEC	KV ENKELROOF 355	BTI 570	CMP-HUT 300x310	ASIL 570-355	SILC-MINI 355 C	BAD 10	AC 350
ENKELROOF 450 EEC	KV ENKELROOF 450	BTI 570	CMP-HUT 300x310	ASIL 570-400	SILC-MINI 400 C	BAD 11	AC 400
ENKELROOF 500 EEC	KV ENKELROOF 500	BTI 915	CMP-HUT 500x510	ASIL 915-500	SIL-C 500	BAD 13	AC 500
ENKELROOF 560 EEC	KV ENKELROOF 560	BTI 915	CMP-HUT 500x510	ASIL 915-560	SIL-C 560	BAD 14	AC 560
ENKELROOF 630 EEC	KV ENKELROOF 630	BTI 1015	CMP-HUT 800x810	ASIL 1015-630	SIL-C 630	BAD 15	AC 630

Model	BTI+ACMP+AMC	BTI+ACMP	CMP-HUT	BTI+AMC
ENKELROOF 150 EEC	-	-	-	BTI+AMC 310
ENKELROOF 190 EEC	-	-	-	BTI+AMC 310
ENKELROOF 220 EEC	-	-	-	BTI+AMC 410
ENKELROOF 250 EEC	-	-	-	BTI+AMC 410
ENKELROOF 315 EEC	BTI+ACMP+AMC 570	BTI+ACMP 570	CMP-HUT 300x310	BTI+AMC 570
ENKELROOF 355 EEC	BTI+ACMP+AMC 570	BTI+ACMP 570	CMP-HUT 300x310	BTI+AMC 570
ENKELROOF 450 EEC	BTI+ACMP+AMC 570	BTI+ACMP 570	CMP-HUT 300x310	BTI+AMC 570
ENKELROOF 500 EEC	BTI+ACMP+AMC 915	BTI+ACMP 915	CMP-HUT 500x510	BTI+AMC 915
ENKELROOF 560 EEC	BTI+ACMP+AMC 915	BTI+ACMP 915	CMP-HUT 500x510	BTI+AMC 915
ENKELROOF 630 EEC	BTI+ACMP+AMC 1015	BTI+ACMP 1015	CMP-HUT 800x810	BTI+AMC 1015

KENTALROOF & KENTALROOF-A

Model	KV	BTI	CMP-HUT	ASIL	SIL	BAD	AC
KENTALROOF 315	KV KENTALROOF 315	BTI 570	CMP-HUT 300x310	ASIL 570-315	SIL-C 315/315	BAD 9	AC 300
KENTALROOF 355	KV KENTALROOF 355	BTI 640	CMP-HUT 500x510	ASIL 640-355	SIL-C 355/355	BAD 10	AC 350
KENTALROOF 400	KV KENTALROOF 400	BTI 640	CMP-HUT 500x510	ASIL 640-400	SIL-C 400/400	BAD 11	AC 400
KENTALROOF 450	KV KENTALROOF 450	BTI 915	CMP-HUT 500x510	ASIL 915-450	SIL-C 450/450	BAD 12	AC 450
KENTALROOF 500	KV KENTALROOF 500	BTI 915	CMP-HUT 500x510	ASIL 915-500	SIL-C 500/500	BAD 13	AC 500
KENTALROOF 560	KV KENTALROOF 560	BTI 915	CMP-HUT 500x510	ASIL 915-560	SIL-C 560/560	BAD 14	AC 560
KENTALROOF 630	KV KENTALROOF 630	BTI 1015	CMP-HUT 800x810	ASIL 1015-630	SIL-C 630/630	BAD 15	AC 630

Model	BTI+ACMP+AMC	BTI+ACMP	CMP-HUT	BTI+AMC
KENTALROOF 315	BTI+ACMP+AMC 570	BTI+ACMP 570	CMP-HUT 300x310	BTI+AMC 570
KENTALROOF 355	BTI+ACMP+AMC 640	BTI+ACMP 640	CMP-HUT 500x510	BTI+AMC 640
KENTALROOF 400	BTI+ACMP+AMC 640	BTI+ACMP 640	CMP-HUT 500x510	BTI+AMC 640
KENTALROOF 450	BTI+ACMP+AMC 915	BTI+ACMP 915	CMP-HUT 500x510	BTI+AMC 915
KENTALROOF 500	BTI+ACMP+AMC 915	BTI+ACMP 915	CMP-HUT 500x510	BTI+AMC 915
KENTALROOF 560	BTI+ACMP+AMC 915	BTI+ACMP 915	CMP-HUT 500x510	BTI+AMC 915
KENTALROOF 630	BTI+ACMP+AMC 1015	BTI+ACMP 1015	CMP-HUT 800x810	BTI+AMC 1015



VORTICE GROUP COMPANIES

VORTICE S.P.A

Strada Cerca, 2
Frazione di Zoate
20067 Tribiano
(Milan) Italy
Tel. (+39) 02 906991
Fax (+39) 02 90699625
vortice.com

VORTICE LIMITED

Beeches House-Eastern
Avenue Burton upon Trent
DE13 0BB United Kingdom
Tel. (+44) 1283 492949
Fax (+44) 1283 544121
vortice.ltd.uk

VORTICE INDUSTRIAL S.R.L.

Via B. Brugnoli 3,
37063 Isola della Scala
(Verona) Italy
Tel. (+39) 045 6631042
Fax (+39) 045 6631039
vorticeindustrial.com

CASALS VENTILACIÓN AIR INDUSTRIAL S.L.

Ctra. Camprodon, s/n 17860
Sant Joan de les
Abadesses
(Girona) Spain
Tel. (+34) 972720150
casals.com

VORTICE LATAM S.A.

Bodega #6
Zona Franca Este Alajuela,
Alajuela 20101
Costa Rica
Tel. (+506) 2201 6934
vortice-latam.com

VORTICE VENTILATION SYSTEM

(Changzhou) Co.LTD
No. 388 West Huanghe Road
Building 19, Changzhou
Post Code: 213000 China
Tel. (+86) 0519 88990150
Fax (+86) 0519 88990151
vortice-china.com

The descriptions and illustrations in this catalogue are intended to be indicative and not binding. Without prejudice to the essential characteristics of the products described and illustrated here, CASALS VENTILACIÓN reserves the right to make, at any time and without notice, changes to parts, aesthetic details or supply of accessories to its products that are deemed to be appropriate for improvement or for any construction or commercial requirement.

This printout completely cancels and replaces all the previous ones.