

 **Casals**

 **VORTICE**
GROUP

RESIDENTIAL WALL FANS




design **vital**
by Casals





Home comfort
under design and
respect for the
environment

The range of fans **desigNtial** by Casals was created with the aim of filling residential spaces with comfort without sacrificing design and aesthetics.

Moving air safely and efficiently has become a maxim for these wall fans that meet the requirements of the ErP Directive and besides, have been manufactured in compliance with the provisions of established safety standards.

Although the **desigNtial** by Casals range has already sought comfort by achieving totally silent operation, the models equipped with EEC electronic motor also ensure lower consumption and adapted to the needs of each moment according to the presence of more or fewer users or the load of the environment.

We do not only want to take care of indoor air quality but also our environment. For this reason, **desigNtial** by Casals has eco-friendly products, in which recycled materials are used.

Bathrooms, toilets, kitchens, living rooms, dining rooms, pantries, laundry rooms and even small commercial premises can find in this catalogue a solution to renew the environment and do it efficiently and discreetly.



Back-draught damper



Automatic back-draught damper



Automatic back-draught shutter



IMQ Safety certificate to guaranty the electromechanical compatibility.



The product meets the performance requirements outlined in ErP directive.



Made with recycled materials

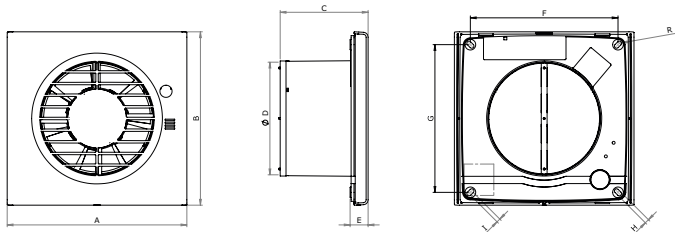
ERELIS

° Casals design

Silent, slim and eco-friendly
extract fan with back-draught
damper for ceiling and wall
installation



° ERELIS by Casals



Ø	A	B	C	D	E	F	G	H	I	R
100	162	158	79	98	18,5	132	132	5	4	2,3
120	185	178	90	119	18,5	152	152	4,5	2	2,25
150	218	213	98	155	18,5	185	185	4,5	4	2,3

• Silent extract fan for wall or ceiling installation with nonreturn damper to prevent the entry of unwanted or contaminating air. Eco-friendly product manufactured with some recycled materials. Modern design with an ultra-thin 17mm thick front panel so that it does not protude when installed, which makes it a compact wall fan ideal for short ducts (perfect for false ceilings and plaster-board). Very easy installation. Thanks to its impeller and motor anchor design with integrated deflectors we achieve very low sound levels but high airflows.

• Housing and impeller made of UV-resistant ABS plastic (prevents aging caused by exposure to sunlight). Self-lubricated friction bearings motor protected against thermal overload.
• Maximum working temperature in continuous: 50°C.

• IPX4 protection. IMQ Safety certificate to guaranty the electro-mechanical compatibility.

• Options:
• Basic.
• Timer (T).
• Humidity sensor (HR) and timer (T).
• Motion sensor (Motion).

• Ideal for ventilation of small and medium spaces of domestic and commercial buildings.

• Installation in ventilation ducts Ø100, 120 and 150.

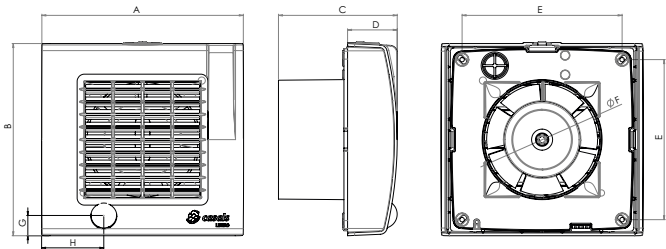
Measures	Airflow (m³/h)	Sound dB(A)	Installation	Damper	Applications
Ø 100 / 120 / 150	85 - 335	31 - 40,1	Wall and ceiling	Back-draught	Small and medium spaces

Casals
soul made fans

LÍDERO

° Casals design

Basic extractor for wall and ceiling installation



Ø	A	B	C	D	E	F	G	H
100	166	159	98	41	132	98	16,5	51
120	186	179	110	42,5	151,5	118	16,5	51
150	222	214	118	44,5	185	155	16,5	51

° LÍDERO by Casals

- Basic extractor for wall or ceiling installation. The LÍDERO B model incorporates an automatic non-return backdraught shutter to prevent the entry of unwanted or contaminating air.
- Wide range of airflow rate, low operating noise level and low power consumption due to the wing profile blade and motor support.
- Housing and impeller made of UV-resistant ABS plastic (prevents aging caused by exposure to sunlight). Self-lubricated bushings motor protected against thermal overload.
- Maximum working temperature in continuous: 50°C.
- IPX4 protection. IMQ Safety certificate to guaranty the electro-mechanical compatibility.
- Options:
 - Basic without automatic backdraught shutter.
 - Automatic backdraught shutter (B).
 - Humidity sensor (HR) and timer (T) and automatic backdraught shutter.
 - Motion sensor (Motion) and automatic backdraught shutter.
- For intermittent or continuous ventilation in bathrooms, toilets, kitchens, dining rooms, living rooms, domestic and commercial spaces.
- To be installed in ventilation ducts. Compatible with 100, 120 and 150 air ducts.

Measures	Airflow (m³/h)	Sound dB(A)	Installation	Shutter	Applications
Ø 100 / 120 / 150	90 - 335	37,5 - 46	Wall and ceiling	Automatic backdraught	Toilets, rooms and kitchens

° casals.com

TEKSTÜR

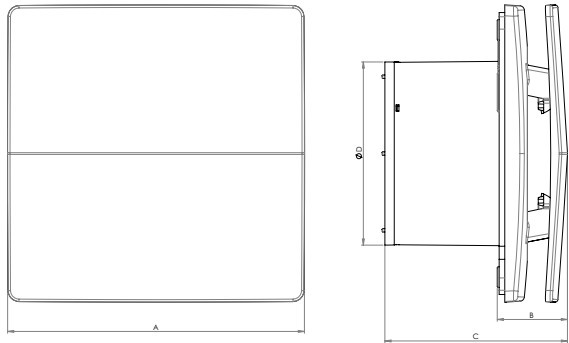
° Casals design

High-end extract fan with timer and back-draught damper for wall and ceiling installation



° TEKSTÜR by Casals

- ° High-end minimalist design extract fan according to European industrial fashion canons with a smooth double textured front panel. By not carrying a grid and having a double textured shell, dust and dirt particles do not adhere easily, making it easier to clean the wall fan. For wall or ceiling installation.
- ° Wide range of airflow rate, low noise level of operation and low energy consumption due to optimized wing-shaped profile blades and motor support designed to favour the passage of extracting air flow.
- ° Housing and impeller made of UV-resistant ABS plastic (prevents aging caused by exposure to sunlight). Self-lubricated bushings motor protected against thermal overload.
- ° Includes electronic timer to set automatic operation as desired between 3 and 20 minutes.
- ° Back-draught damper to prevent the entry of unwanted or polluting air.
- ° Maximum working temperature in continuous: 50°C.
- ° IPX4 protection. IMQ Safety certificate to guaranty the electro mechanical compatibility.
- ° Ideal for living rooms, bathrooms, and any space with high-end design where the fan goes unnoticed by its nice modern style.
- ° To be installed in ventilation ducts. Compatible with 100 and 125 air ducts.



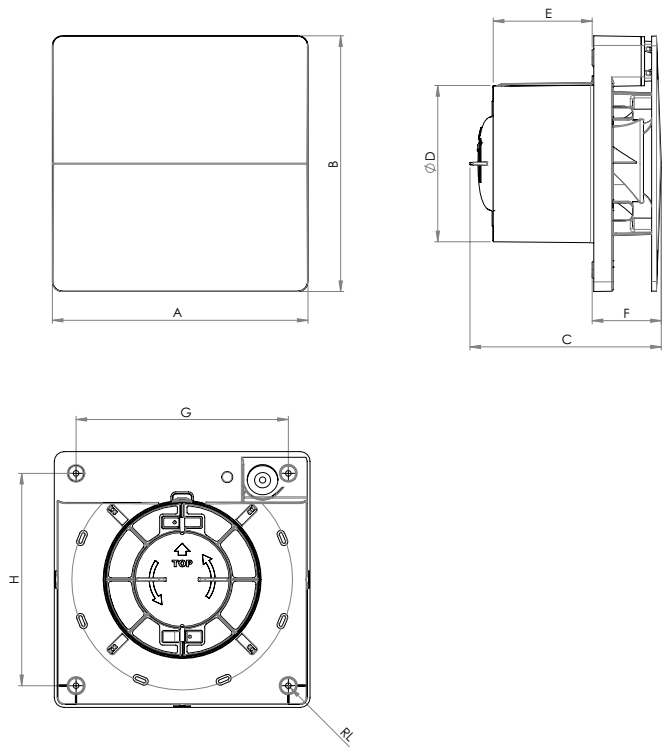
Ø	A	B	C	D
100 T	159	38	98	98
120 T	179	43	115	118,9

Measures	Airflow (m³/h)	Sound dB(A)	Installation	Damper	Applications
Ø 100 / 120	85 - 175	33,1 - 39,1	Wall and ceiling	Back-draught	Living room, bathrooms and spaces of design

TEKSTÜR PLUS

° Casals design

Ultra-quiet, high-end extract fan with long life bearings and automatic back draught damper for ceiling and wall installation



Ø	A	B	C	D	E	F	G	H	L
100	159	159	119	98	61,5	43	132	132	3,5
120	179	179	130	118	71	45	152	152	3,5

° TEKSTÜR PLUS by Casals

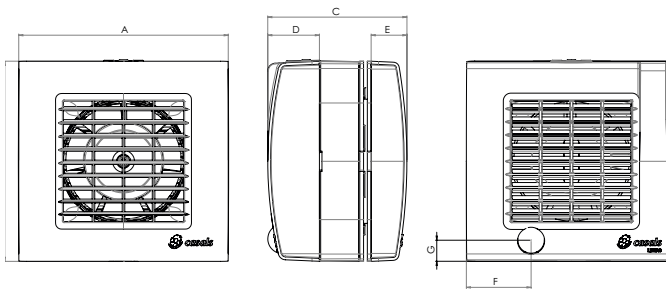
- ° Ultra-quiet, high-end design extract fan according to European industrial fashion canons with a smooth double textured front panel. By not carrying a grid and having a double textured shell, dust and dirt particles do not adhere easily, making it easier to clean the wall fan. TEKSTÜR PLUS wall fans are carefully designed to provide low environmental impact, using recyclable materials. Motor with long-life ball bearings that guarantee more than 30,000 hours of use and protected against thermal overload. Impact resistant and UV resistant thermoplastic ABS housing (prevents aging caused by exposure to sunlight). PP resin helico-centrifugal mixed-flow impellers. Equipped with a butterfly-shaped automatic non-return back-draught damper carefully designed to prevent the return of dirty air or contaminants when the wall fan is off.
- ° The helico-centrifugal impeller and motor supports have been specially designed to guarantee a high efficiency performance, low energy consumption and reduction of the sound level. Its compact design allows it to be ideal for installations with reduced space on the wall or ceiling.
- ° Maximum working temperature in continuous: 50°C.
- ° IPX5 and IP45 protection. IMQ Safety certificate to guaranty the electromechanical compatibility.
- ° With long life bearings (LL).
- ° Options:
 - ° Basic.
 - ° Timer (T).
 - ° Humidity sensor (HR) and timer (T).
 - ° Motion sensor (Motion).
- ° Ideal for living rooms, bathrooms, and any space with high-end design where the fan goes unnoticed by its nice modern style.

Measures	Airflow (m³/h)	Sound dB(A)	Installation	Damper	Applications
Ø 100 / 120	90 - 175	26,9 - 32,3	Wall and ceiling	Automatic back-draught	Living room, bathrooms and spaces of design

IKHUNA

° Casals design

Extractor for
window installation



Ø	A	B	C	D	E	F	G
100	166	159	110	41	28,5	51	16,5
120	186	179	123	42,5	28,5	51	16,5
150	222	214	132	44,5	29	51	16,5

° IKHUNA by Casals

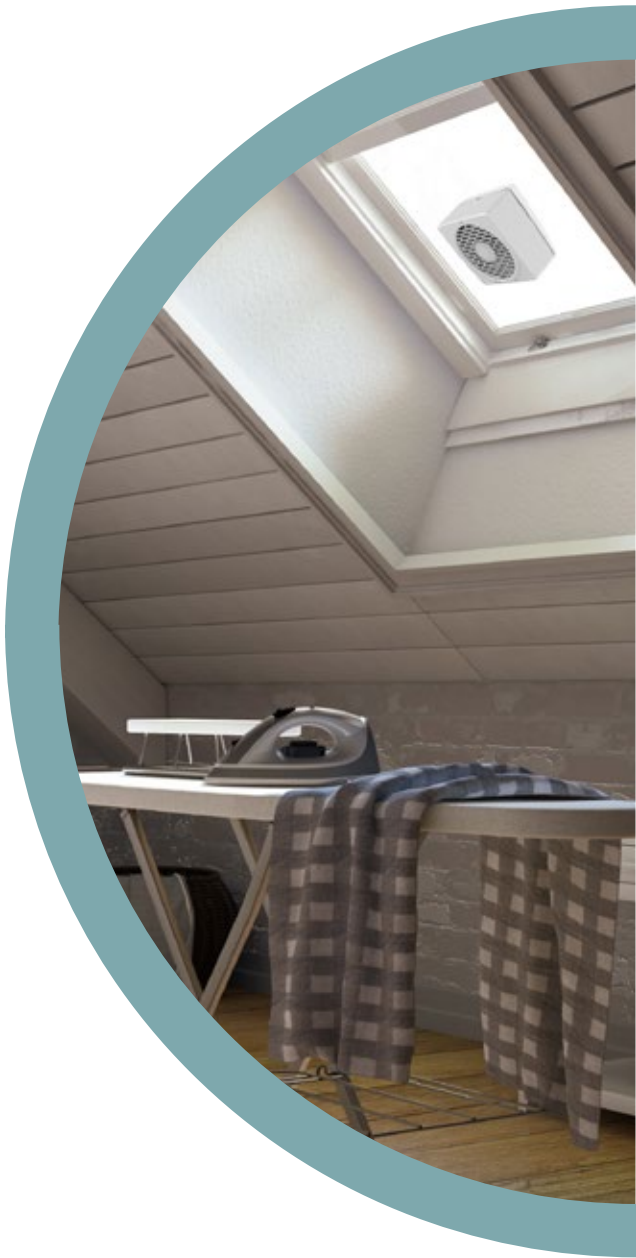
- Extractor for window installation. The IKHUNA B model incorporates an automatic non-return backdraught shutter to prevent the entry of unwanted or contaminating air.
- Wide range of airflow rate, low operating noise level and low power consumption due to the wing profile blade and motor support .
- Housing and impeller made of UV-resistant ABS plastic (prevents aging caused by exposure to sunlight). Self-lubricated bushings motor protected against thermal overload.
- Maximum working temperature in continuous: 50°C.
- IPX4 protection. IMQ Safety certificate to guaranty the electro-mechanical compatibility.
- Options:
 - Basic without automatic back-draught shutter.
 - Automatic back-draught shutter (B).
 - Humidity sensor (HR) and timer (T) and automatic back-draught shutter.
 - Motion sensor (Motion) and automatic back-draught shutter.
- For intermittent or continuous ventilation in bathrooms, toilets, kitchens, dining rooms, living rooms, domestic and commercial spaces.

Measures	Airflow (m³/h)	Sound dB(A)	Installation	Shutter	Applications
Ø 100 / 120 / 150	90 - 335	37,5 - 46	Windows	Automatic back draught	Bathrooms, living rooms

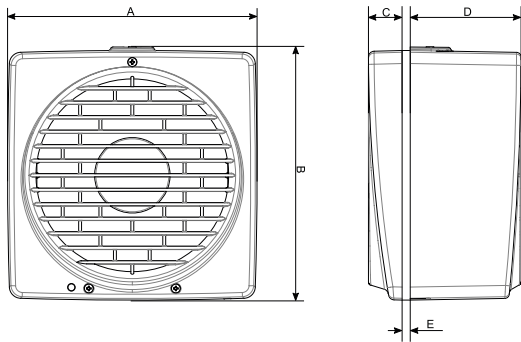
KUBALIK

° Casals design

High airflow rate and silent reversible wall fan with automatic back-draught shutter for window or wall installation



° KUBALIK by Casals



Ø	A	B	C	D	E	hole
150	215	218	31	97,5	2/38	185/190
230	294	297	31	130	2/38	257/262
300	390	393	31	147	2/38	324/329

° Reversible, high-flow rate and silent wall fan with automatic back-draught shutter to prevent the entry of unwanted or contaminant air. It can be installed in a window or wall. Being reversible you can choose if you want to supply air in a room or remove it. KUBALIK wall fans are carefully designed to provide low environmental impact, using recyclable materials.

° Housing and impeller made of UV-resistant ABS plastic (prevents aging caused by exposure to sunlight). The internal components are made of impact resistant PS. Self-lubricated automatic friction bearings motor protected against thermal overload.

° Easy and fast installation thanks to its innovative design.

° Maximum working temperature in continuous: 50°C.

° IPX4 protection. IMQ Safety certificate to guaranty the electro-mechanical compatibility.

° Applicable to domestic spaces such as kitchens, dining rooms, laundry rooms, bathrooms, etc. But also, in commercial environments such as shops, bars, cafés, gyms, restaurants, offices, schools, etc.

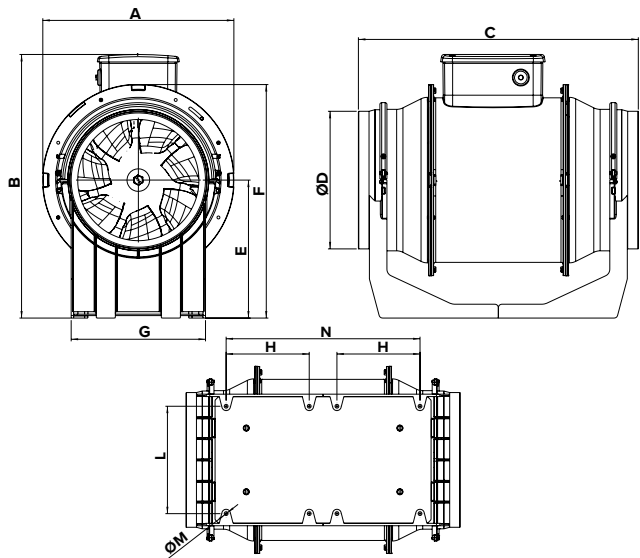
° Designed to be installed in any type of window and wall.

Measures	Airflow (m³/h)	Sound dB(A)	Installation	Shutter	Applications
Ø 150 / 230 / 300	Up to 1.050	37,5 - 40,2	Window and wall	Automatic back-draught	Laundry rooms and bathrooms

KUVIO

° Casals design

High efficiency In-line mixed flow fan made of self-extinguishing plastic resin and resistant to aggressive chemical agents



Ø	A	B	C	ØD	E	F	G	H	L	ØM	N
100	188,5	211	303	96	101,5	189	90	60	80	5,5	-
125	188,5	211	258	122	101,5	189	90	60	80	5,5	-
150	214,5	234	294	146	112,5	212	110	60	80	5,5	-
160	214,5	234	272,5	156	112,5	212	110	60	80	5,5	-
200	270	373	396	194,5	195	330	190	120	155	5,5	-
250	300	378	322	243	190	329	200	70	170	5,5	174,5
315	373	446	420	307	224	398	309	110	255	8,5	259,5

° KUVIO by Casals

° High efficiency In-line mixed flow fan with motor-holder enclosures, end cones and mixed flow impellers constructed in self-extinguishing plastic resin with a mineral-based additive to ensure dimensional stability. The side cones incorporate the fan's anchoring brackets onto the target surface for safe, quick installation. Designed to allow the assembly or disassembly of the fans without manipulating the ducts.

° Standard version and timer version (T). Two-speed (sizes 100-160) and 3 speed (200-315) monophasic motor with thermal overload cut-out and shafts turning on ball bearings to guarantee long life continuous work (at least 30.000 hours at the maximum plate temperature. Standard voltages 220-240V 50Hz and 60 Hz. Speed adjustable with accessories.

° Maximum working temperature in continuous: 50°C.

° IP44 protection. IMQ Safety certificate to guaranty the electro-mechanical compatibility.

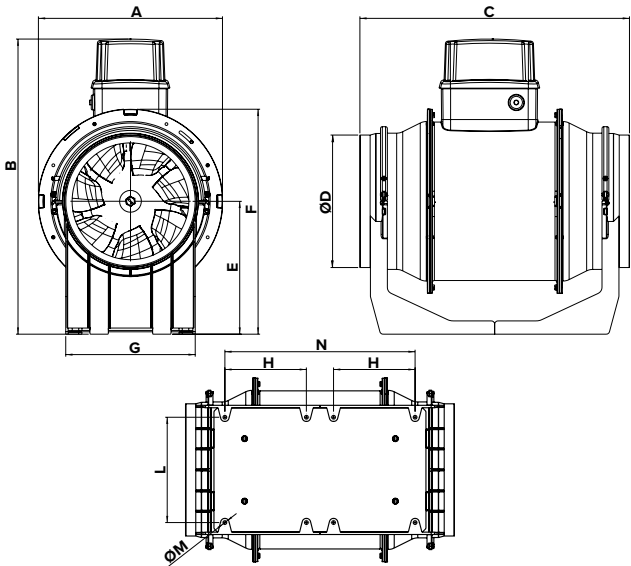
° Designed for duct supply and exhaust ventilation systems that require excellent response in terms of high pressure and air flow, while keeping noise under control. It can be used in many small and medium ventilation installations for air renewal such as: bathrooms, changing rooms, commercial offices, extraction in domestic kitchens after the extraction hood, schools, waiting room, commercial premises, laundries, shops, bars, restaurants, laboratories, etc.

Measures	Versions	Airflow (m³/h)	Sound dB(A)	Installation	Applications
Ø 100 - 315	Standard & timer	260 - 2.750	50 - 69	in line	Schools and commercial premises

KUVIO EEC

° **Casals** design

High efficiency EC in-line mixed flow fan made of self-extinguishing plastic resin and resistant to aggressive chemical agents



Ø	A	B	C	ØD	E	F	G	H	L	ØM	N
100	188,5	240	303	96	101,5	189	90	60	80	5,5	-
125	188,5	240	258	122	101,5	189	90	60	80	5,5	-
150	214,5	265	294	146	112,5	212	110	60	80	5,5	-
160	214,5	265	272,5	156	112,5	212	110	60	80	5,5	-
200	270	372,5	396	194,5	195	330	190	120	155	5,5	280
250	300	377,5	322	243	190	329	200	70	170	6,5	174,5
315	373	506	420	307	224	398	309	110	255	8,5	259,5

° KUVIO EEC by Casals

- High efficiency In-line mixed flow fan with motor-holder enclosures, end cones and mixed flow impellers constructed in self-extinguishing plastic resin with a mineral-based additive to ensure dimensional stability. The side cones incorporate the fan's anchoring brackets onto the target surface for safe, quick installation. Designed to allow the assembly or disassembly of the fans without manipulating the ducts.
- High efficiency EC (brushless) motors that are continuously adjustable (0-10V signal) or are settable at installation for 2-speed operation. Monophasic motor with thermal overload cut-out and shafts turning on ball bearings to guarantee long life continuous work (at least 40.000 hours at the maximum plate temperature. Standard voltages 220-240V 50Hz and 60 Hz.
- Maximum working temperature in continuous: 50°C.
- IP44 protection. IMQ Safety certificate to guaranty the electro-mechanical compatibility.
- Their small radial dimensions make them an efficient and effective solution to save space in the ventilation of low visual impact of residential, commercial or industrial premises. Designed for duct supply and exhaust ventilation systems that require excellent response in terms of high pressure and air flow, while keeping noise under control. Equipped with EC motor which reduces power consumption.
- It can be used in many small and medium ventilation installations for air renewal such as: bathrooms and changing rooms, commercial offices, extraction in domestic kitchens after the extraction hood, schools, waiting room, commercial premises, laundries, shops, bars, restaurants, laboratories, etc.

Measures

Ø 100 - 315

Airflow (m³/h)

280 - 2.630

Sound dB(A)

55 - 66

Installation

in line

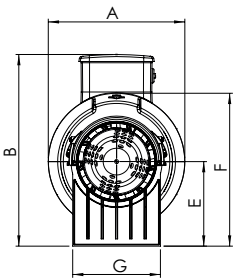
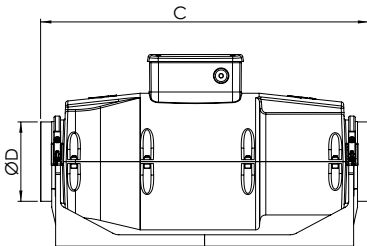
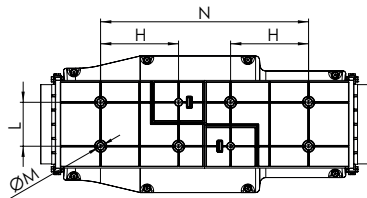
Applications

Residential, commercial or industrial premises

KUVIO-Q

° Casals design

Ultra quiet in-line
mixed flow fan



Ø	A	B	C	ØD	E	F	G	H	L	ØM	N
100	210	294,5	639	97	130	235	135	120	67,5	5,5	320
125	210	294,5	504,5	122	130	235	135	120	67,5	5,5	320
150	232	320,5	685	147	145	261,5	170	132	85	5,5	360
160	232	320,5	570	156.5	145	261,5	170	135	85	5,5	360
200	322.5	417,5	625,5	194,5	195	363,5	190	120	155	5,5	510
250	318	412	751,5	243	189,5	363,5	200	70	170	6,5	604,5
315	415,5	496,5	940	307	244	441	309	110	255	8,5	780

° KUVIO-Q by Casals

- High efficiency in-line ultra-quiet fan with motor supports, inlet flange and mixed flow impeller made of self-extinguishing plastic resin with a mineral-based additive to guarantee the structural stability of the fan.
- Sound-absorbing coating, which is fully integrated in the outer casing and optimised to minimise environmental sound emissions.
- Composed of environmentally friendly materials, fully recycled and recyclabl once the product's useful life has ended.
- For use in small and medium-sized ventilation installations for air renewal in: bathrooms and changing rooms, commercial offices, extraction in domestic kitchens (after the extraction hood), schools, waiting rooms, commercial premises, laundries, shops, bars, restaurants, laboratories etc.
- Available versions:
 - Standard and timer (T).

Measures

Ø 100 - 315

Airflow (m³/h)

260 - 2.890

Sound dB(A)

15,7 - 38,3

Installation

in line

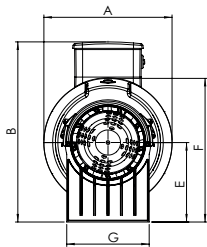
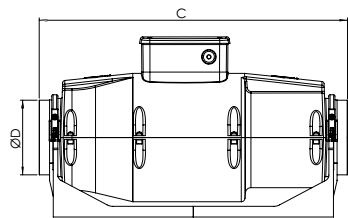
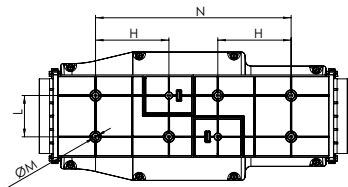
Applications

Residential, commercial
or industrial premises

KUVIO-Q EEC

° Casals design

Ultra quiet in-line mixed-flow fan with EC motor



Ø	A	B	C	ØD	E	F	G	H	L	ØM	N
100	210	294,6	639	97	130	235	135	120	67,5	5,5	320
125	210	294,6	504,5	122	130	235	135	120	67,5	5,5	320
150	232	320,6	685	147	145	261,5	170	132	85	5,5	360
160	232	320,6	570	156,5	145	261,5	170	135	85	5,5	360
200	322,5	417,6	625,5	194,5	195	363,5	190	120	155	5,5	510
250	318	411,9	751,5	243	189,5	363,5	200	70	170	6,5	604,5
315	415,5	557,8	940	307	234	441	309	110	255	8,5	780

° KUVIO-Q EEC by Casals

- Soundproofed mixed-flow fan for duct with EC motor, which allows to optimize energy consumption.
- High efficiency in-line ultra-quiet fan with motor supports, inlet flange and mixed flow impeller made of self-extinguishing plastic resin with a mineral-based additive to guarantee the structural stability of the fan.
- Sound-absorbing coating, which is fully integrated in the external casing and optimised to minimise environmental sound emissions.
- EC motors with low consumption brushless electronic control.
- User adjustable speed through 0-10V signal.
- Composed of environmentally friendly materials, fully recycled and recyclable once the product's useful life has ended.
- For use in spaces where silence is essential. For small and medium-sized ventilation installations for air renewal in: bathrooms and changing rooms, commercial offices, extraction in domestic kitchens (after the extraction hood), schools, waiting rooms, commercial premises, laundries, shops, bars, restaurants, laboratories etc.

Measures

Ø 100 - 315

Airflow (m³/h)

300 - 2.640

Sound dB(A)

18 - 35,4

Installation

in line

Applications

Residential, commercial or industrial premises



Do you need
help with your
project?

Casals Service
consultant help



VORTICE GROUP COMPANIES

VORTICE S.P.A

Strada Cerca, 2
Frazione di Zoate
20067 Tribiano
(Milan) Italy
Tel. (+39) 02 906991
Fax (+39) 02 90699625
vortice.com

VORTICE LIMITED

Beeches House-Eastern
Avenue Burton upon Trent
DE13 0BB United Kingdom
Tel. (+44) 1283 492949
Fax (+44) 1283 544121
vortice.ltd.uk

VORTICE INDUSTRIAL S.R.L.

Via B. Brugnoli 3,
37063 Isola della Scala
(Verona) Italy
Tel. (+39) 045 6631042
Fax (+39) 045 6631039
vorticeindustrial.com

CASALS VENTILACIÓN AIR INDUSTRIAL S.L.

Ctra. Camprodon, s/n 17860
Sant Joan de les
Abadesses
(Girona) Spain
Tel. (+34) 972720150
casals.com

VORTICE LATAM S.A.

Bodega #6
Zona Franca Este Alajuela,
Alajuela 20101
Costa Rica
Tel. (+506) 2201 6934
vortice-latam.com

VORTICE VENTILATION SYSTEM

(Changzhou) Co.LTD
No. 388 West Huanghe Road
Building 19, Changzhou
Post Code: 213000 China
Tel. (+86) 0519 88990150
Fax (+86) 0519 88990151
vortice-china.com

The descriptions and illustrations in this catalogue are intended to be indicative and not binding. Without prejudice to the essential characteristics of the products described and illustrated here, CASALS reserves the right to make, at any time and without notice, changes to parts, aesthetic details or supply of accessories to its products that are deemed to be appropriate for improvement or for any construction or commercial requirement.

This printout completely cancels and replaces all the previous ones